

M1

IN THE UNITED STATES DISTRICT COURT
FOR THE WESTERN DISTRICT OF TENNESSEE
WESTERN DIVISION

FILED BY JKH D.C.

05 JUN 13 PM 3:08

Robert P. Di Trolio
CLERK U.S. DIST. CT.
W.D. OF TN. MEMPHIS

DARIUS LITTLE,

Plaintiff,

v.

No. 96-2520-M1/A

SHELBY COUNTY, TENNESSEE and
A.C. GILLESS, individually and
in his official capacity as Sheriff of
Shelby County, Tennessee;

Defendants.

NOTICE OF FILING OF SHELBY COUNTY SHERIFF'S OFFICE
APRIL 2005 JAIL REPORT CARD

COME NOW the Defendants Shelby County and Mark Luttrell, in his official capacity,
by and through their counsel of record, and give notice of the filing of the Shelby County
Sheriff's Office's April 2005 Jail Report Card and Executive Summary.

Respectfully submitted,



DEBRA L. FESSENDEN #011818
Assistant County Attorney
160 N. Main Street, Suite 660
Memphis, TN 38103
901.545.2139

CERTIFICATE OF SERVICE

I, Debra L. Fessenden, do hereby certify that a copy of the foregoing has been served upon Mr. Robert Hutton and Mr. Adam Glankler, attorneys at law, 1700 One Commerce Square, Memphis, Tennessee 38103 via U.S. Mail, postage prepaid on this 13 day of June, 2005.


DEBRA L. FESSENDEN #011818

Shelby County Sheriff's Office

April 2005 Jail Report Card



Jail Population Report

April-05

(Page 1)

Jail Population Stats	This Month to Last Month				Same Month Last Year			Year to Date (Last Year/This Year)			
	Apr-05	Mar-05	(+/-)	% Chng	Apr-04	(+/-)	% Chng	2005	2004	(+/-)	% Chng
Average Daily Population ¹	2482	2352	130	6%	2198	284	13%	2380	2200	181	8%
201 Poplar	2237	2117	120	6%	1994	243	12%	2156	2017	140	7%
Jail East	245	235	10	4%	204	41	20%	224	183	41	22%
Total Bookings	4662	4697	-35	-1%	4565	97	2%	18143	18071	72	0%
201 Poplar	3758	3784	-26	-1%	3724	34	1%	14744	14872	-128	-1%
Jail East	904	913	-9	-1%	841	63	7%	3399	3199	200	6%
No Prior Incarcerations ²	687	649	38	6%	569	118	21%	2568	2411	157	7%
Recidivist Inmates ²	3975	4048	-73	-2%	3996	-21	-1%	15575	15660	-85	-1%
Total Number Released	4596	4670	-74	-2%	4498	98	2%	17915	17929	-14	0%
201 Poplar	3683	3776	-93	-2%	3678	5	0%	14562	14782	-220	-1%
Jail East	913	894	19	2%	820	93	11%	3353	3147	206	7%
Average Length of Stay	16.0	15.5	0.5	3%	14.5	1.5	11%	15.7	14.7	1.0	7%
201 Poplar (days)	17.9	17.3	0.6	3%	16.1	1.8	11%	17.6	16.4	1.1	7%
Jail East (days)	8.1	8.0	0.1	1%	7.3	0.8	11%	7.9	6.9	1.0	14%
201 - Avg. Booking Process Time	2.48	2.32	0.16	7%	1.97	0.51	26%	2.8	2.3	0.4	19%
JE - Avg. Booking Process Time	1.02	1.06	-0.04	-4%	0.96	0.06	6%	1.1	1.1	0.0	0%
AVG Daily Pen Ready Prisoners	5	5	0	0%	11	-6	-55%	7	12	-5	-41%
Misdemeanor Citations Issued	1580	1774	-194	-11%	1778	-198	-11%	6787	7371	-584	-8%
Legal Status	2423	2260	163	7%	2135	288	13%	9256	8544	712	8%
Pre-trial	2183	2021	162	8%	1839	344	19%	8322	7384	938	13%
Sentenced	86	85	1	1%	164	-78	-48%	362	636	-274	-43%
Hold	154	154	0	0%	132	22	17%	572	524	48	9%
Remanded Juveniles	16	6	10	167%	18	-2	-11%	39	54	-15	-28%
Male	15	6	9	150%	18	-3	-17%	37	51	-14	-27%
Female	1	0	1	0%	0	1	0%	2	3	-1	-33%
Avg. No Prior Incarcerations ³	327	319	8	3%	262	65	25%	334	284	50.25	18%
Avg. Recidivist Inmates ³	2150	2007	143	7%	1926	224	12%	2041	1914	127	7%
1 to 2 Prior Incarcerations	339	316	23	7%	308	31	10%	322	306	16	5%
3rd Prior Incarceration	132	114	18	16%	110	22	20%	117	112	5	4%
4 to 5 Prior Incarcerations	184	186	-2	-1%	205	-21	-10%	188	216	-29	-13%
6 or More Prior Incarcerations	1495	1391	104	7%	1303	192	15%	1415	1280	135	11%

Green: decrease Red: increase

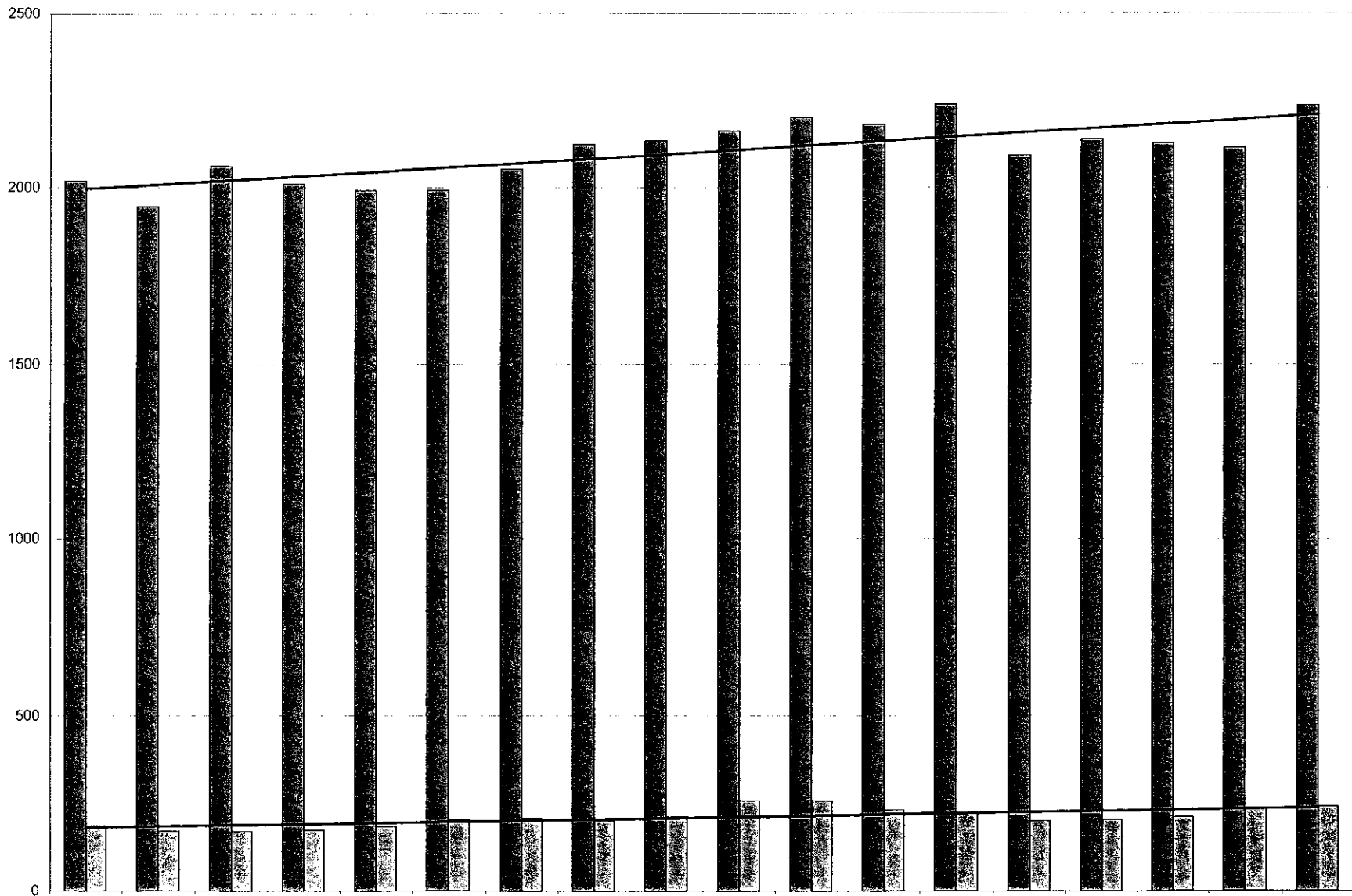
1 Average Daily Population does not include inmates in PWER/MMHI.

2 Numbers are based on Total Bookings.

3 Numbers are based on Average Daily Population.

Note: Probation violations in Criminal Court counted as pre-trial beginning September 2004. Previously counted as sentenced.

AVERAGE DAILY POPULATION



	Nov-03	Dec-03	Jan-04	Feb-04	Mar-04	Apr-04	May-04	Jun-04	Jul-04	Aug-04	Sep-04	Oct-04	Nov-04	Dec-04	Jan-05	Feb-05	Mar-05	Apr-05
201 Poplar	2020	1947	2065	2014	1993	1994	2054	2126	2137	2165	2201	2183	2242	2093	2142	2128	2117	2237
Jail East	187	171	170	173	185	204	207	200	212	260	260	233	226	199	203	213	235	245

Jail Court Report

April-05

(Page 2)

Jail Court Stats	This Month to Last Month				Same Month Last Year			Year to Date (Last Year/This Year)			
	Apr-05	Mar-05	(+/-)	% Chng	Apr-04	(+/-)	% Chng	2005	2004	(+/-)	% Chng
Inmates in Gen. Sessions Cases Pending	777	718	59	8%	659	118	18%	2960	2765	195	7%
Less than One Month	572	514	58	11%	509	63	12%	2118	1996	122	6%
One to Five Months	186	185	1	1%	140	46	33%	776	721	56	8%
Six to Eleven Months	8	9	-1	-11%	5	3	60%	33	20	13	65%
One Year or Greater	11	10	1	10%	5	6	120%	33	29	5	16%
Inmates in Gen. Sessions Pending by Offense	777	718	59	8%	659	118	18%	2960	2765	195	7%
Felony	574	525	49	9%	489	85	17%	2139	2020	119	6%
Misdemeanor	203	193	10	5%	170	33	19%	821	745	76	10%
Inmates in Criminal Court Cases Pending	844	814	30	4%	810	34	4%	3351	3133	219	7%
Less than One Month	91	89	2	2%	89	2	2%	315	302	14	4%
One to Five Months	261	235	26	11%	298	-37	-12%	1045	1055	-10	-1%
Six to Eleven Months	262	269	-7	-3%	197	65	33%	1104	861	243	28%
One to Two Years	214	205	9	4%	207	7	3%	825	825	1	0%
Three Years or Greater	16	16	0	0%	19	-3	-16%	62	91	-29	-32%
Inmates in Criminal Court Pending by Offense	844	814	30	4%	810	34	4%	3351	3133	219	7%
Felony	824	795	29	4%	790	34	4%	3281	3051	230	8%
Misdemeanor	20	19	1	5%	20	0	0%	70	82	-12	-14%
HTS Not Indicted (at least 1 chrg.)	51	59	-8	-14%	73	-22	-30%	248	268	-20	-7%
Six to Eleven Months	36	45	-9	-20%	53	-17	-32%	182	193	-11	-6%
One Year or Greater	15	14	1	7%	20	-5	-25%	66	75	-9	-12%
HTS Not Indicted (current incar.)	273	272	1	0%	210	63	30%	1012	978	34	3%
Less than Six Months	258	261	-3	-1%	190	68	36%	963	911	52	6%
Six to Eleven Months	15	11	4	36%	19	-4	-21%	47	62	-15	-24%
One Year or Greater	0	0	0	0%	1	-1	-100%	2	5	-3	-60%
Booked One or More Drug Charges	587	569	18	3%	497	90	18%	2327	2080	247	12%
Male	492	487	5	1%	433	59	14%	1999	1837	162	9%
Female	95	82	13	16%	64	31	48%	328	243	85	35%
*Total Assessed for Drug Treatment Program	30	28	2	7%	48	-18	-38%	115	145	-30	-21%
*Total Accepted into Program	26	21	5	24%	23	3	13%	84	72	12	17%
*Accepted & ROR to Program	4	3	1	33%	10	-6	-60%	16	30	-14	-47%
*Accepted & not ROR to Program	22	18	4	22%	13	9	69%	68	42	26	62%

Green: decrease Red: increase

HTS (Held-to-State)

ROR (Release on Recognizance)

*No data available from Drug Court from August to December 2004.

Jail Incidents Report - 201 Poplar

April-05

(Page 3)

201 Poplar	This Month to Last Month				Same Month Last Year			Year to Date (Last Year/This Year)			
	Apr-05	Mar-05	(+/-)	% Chng	Apr-04	(+/-)	% Chng	2005	2004	(+/-)	% Chng
Total Incidents	923	816	107	13%	482	441	91%	3365	2577	788	31%
201 Poplar	882	770	112	15%	445	437	98%	3211	2452	759	31%
Jail East	41	46	-5	-11%	37	4	11%	154	125	29	23%
Assaultive	48	53	-5	-9%	35	13	37%	204	189	15	8%
Alleged Rapes	0	0	0	0%	0	0	0%	1	0	1	0%
Assault to Staff	11	16	-5	-31%	7	4	57%	58	39	19	49%
Inmate Assault	6	5	1	20%	5	1	20%	26	49	-23	-47%
Inmate/Inmate Fight	24	21	3	14%	20	4	20%	83	82	1	1%
Spit/Throw Urine, Feces, Food on Staff	7	11	-4	-36%	3	4	133%	35	19	16	84%
Serious Violent Incidents	2	2	0	0.0%	0	2	0.0%	7	0	7	0.0%
Minor Violent Incidents	46	51	-5	-9.8%	0	46	0.0%	197	0	197	0.0%
Non- Assaultive	738	600	138	23.0%	332	406	122.3%	2579	1906	673	35.3%
Obscene Actions	42	27	15	55.6%	20	22	110.0%	141	108	33	30.6%
Refuse Staff Order	219	180	39	21.7%	96	123	128.1%	755	578	177	30.6%
Threaten Staff by Inmate	31	25	6	24.0%	8	23	287.5%	101	68	33	48.5%
Disrespect to Staff	156	133	23	17.3%	80	76	95.0%	542	411	131	31.9%
Inmates Altercation Verbal	52	46	6	13.0%	17	35	205.9%	178	144	34	23.6%
Vulgar Language	120	103	17	16.5%	53	67	126.4%	402	260	142	54.6%
Inciting Riot	2	6	-4	-66.7%	6	-4	-66.7%	27	25	2	8.0%
Destruction of Property	43	19	24	126.3%	11	32	290.9%	126	55	71	129.1%
Contraband	39	63	-24	-38.1%	29	10	34.5%	194	157	37	23.6%
Possession of Contraband	24	41	-17	-41.5%	20	4	20.0%	130	105	25	23.8%
Found Contraband	15	22	-7	-31.8%	9	6	66.7%	64	52	12	23.1%
Other	56	53	3	5.7%	49	7	14.3%	232	198	34	17.2%
Suicidal Behavior	16	22	-6	-27.3%	18	-2	-11.1%	73	50	23	46.0%
Suspicious Circumstances	22	21	1	4.8%	25	-3	-12.0%	109	111	-2	-1.8%
Habitual Minor Rule Violator	18	10	8	80.0%	6	12	200.0%	50	37	13	35.1%
Deaths	1	1	0	0.0%	0	1	0.0%	2	2	0	0.0%
Suicides	0	0	0	0.0%	0	0	0.0%	0	1	-1	-100.0%
Other Deaths	1	1	0	0.0%	0	1	0.0%	2	1	1	100.0%

Green: decrease Red: increase

*Poss of Contraband includes poss of currency, hide prescribed meds, poss weapon, & poss alcohol/drugs

Jail Incidents Report - Jail East

April-05

(Page 4)

Jail East	This Month to Last Month				Same Month Last Year			Year to Date (Last Year/This Year)			
	Apr-05	Mar-05	(+/-)	% Chng	Apr-04	(+/-)	% Chng	2005	2004	(+/-)	% Chng
Total Incidents	923	816	107	13%	482	441	91%	3365	2577	788	31%
201 Poplar	882	770	112	15%	445	437	98%	3211	2452	759	31%
Jail East	41	46	-5	-11%	37	4	11%	154	125	29	23%
Assaultive	2	4	-2	-50%	6	-4	-67%	14	8	6	75%
Alleged Rapes	0	0	0	0%	0	0	0%	0	0	0	0%
Assault to Staff	0	1	-1	-100%	3	-3	-100%	6	3	3	100%
Inmate Assault	0	1	-1	-100%	2	-2	-100%	1	4	-3	-75%
Inmate/Inmate Fight	0	2	-2	-100%	1	-1	-100%	4	1	3	300%
Spit/Throw Urine, Feces, Food on Staff	2	0	2	0%	0	2	0%	3	0	3	0%
Serious Violent Incidents	0	0	0	0.0%	0	0	0.0%	0	0	0	0.0%
Minor Violent Incidents	2	0	2	0.0%	0	2	0.0%	2	0	2	0.0%
Non- Assaultive	30	33	-3	-9.1%	30	0	0.0%	105	102	3	2.9%
Obscene Actions	0	1	-1	-100.0%	0	0	0.0%	2	2	0	0.0%
Refuse Staff Order	10	7	3	42.9%	9	1	11.1%	26	25	1	4.0%
Threaten Staff by Inmate	1	2	-1	-50.0%	1	0	0.0%	4	1	3	300.0%
Disrespect to Staff	4	7	-3	-42.9%	4	0	0.0%	20	13	7	53.8%
Inmates Altercation Verbal	6	7	-1	-14.3%	7	-1	-14.3%	22	25	-3	-12.0%
Vulgar Language	4	4	0	0.0%	5	-1	-20.0%	14	14	0	0.0%
Inciting Riot	0	0	0	0.0%	0	0	0.0%	0	0	0	0.0%
Destruction of Property	1	1	0	0.0%	0	1	0.0%	3	0	3	0.0%
Contraband	6	1	5	500.0%	1	5	500.0%	14	8	6	75.0%
Possession of Contraband	5	1	4	400.0%	1	4	400.0%	12	8	4	50.0%
Found Contraband	1	0	1	0.0%	0	1	0.0%	2	0	2	0.0%
Other	3	8	-5	-62.5%	0	3	0.0%	20	7	13	185.7%
Suicidal Behavior	2	3	-1	-33.3%	0	2	0.0%	7	1	6	600.0%
Suspicious Circumstances	1	5	-4	-80.0%	0	1	0.0%	13	6	7	116.7%
Habitual Minor Rule Violator	0	0	0	0.0%	0	0	0.0%	0	0	0	0.0%
Deaths	0	0	0	0.0%	0	0	0.0%	1	0	1	0.0%
Suicides	0	0	0	0.0%	0	0	0.0%	0	0	0	0.0%
Other Deaths	0	0	0	0.0%	0	0	0.0%	1	0	1	0.0%

Green: decrease Red: increase

Jail Classifications Report

April-05

(Page 5)

Jail Classifications Stats	This Month to Last Month				Same Month Last Year			Year to Date (Last Year/This Year)			
	Apr-05	Mar-05	(+/-)	% Chng	Apr-04	(+/-)	% Chng	2005	2004	(+/-)	% Chng
Total Primary Classifications	3807	3772	35	1%	3755	52	1%	14645	14757	-112	-1%
201 Poplar	3079	3062	17	1%	3064	15	0%	11958	12282	-324	-3%
Jail East	728	710	18	3%	691	37	5%	2687	2475	212	9%
Maximum Security Level	162	167	-5	-3%	179	-17	-9%	651	652	-1	0%
9-High	13	14	-1	-7%	13	0	0%	56	48	8	17%
8-Close	149	153	-4	-3%	166	-17	-10%	595	604	-9	-1%
Medium Security Level	2086	2033	53	3%	1986	100	5%	7864	7738	126	2%
7-Medium High	862	891	-29	-3%	858	4	0%	3341	3360	-19	-1%
6-Medium	746	719	27	4%	745	1	0%	2747	2780	-33	-1%
5-Low Medium	478	423	55	13%	383	95	25%	1776	1598	178	11%
Minimum Security Level	1559	1572	-13	-1%	1590	-31	-2%	6130	6327	-197	-3%
4-Minimum Pre-Sentence	1526	1530	-4	0%	1550	-24	-2%	5976	6151	-175	-3%
3-Minimum	0	1	-1	-100%	0	0	0%	4	3	1	33%
2-Low	12	12	0	0%	7	5	71%	62	54	8	15%
1-Very Low	21	29	-8	-28%	33	-12	-36%	88	119	-31	-26%
Total Classification Reviews	521	524	-3	-1%	453	68	15%	1819	1615	204	13%
Overrides	57	44	13	30%	76	-19	-25%	194	272	-78	-29%
AVG Primary Classifications per Day	127	122	5	4%	125	2	2%	122	487	-365	-75%
AVG Classification Reviews per Day	17	17	0	0%	15	2	13%	15	54	-39	-72%

Incidents	This Month to Last Month				Same Month Last Year			Year to Date (Last Year/This Year)			
	Apr-05	Mar-05	(+/-)	% Chng	Apr-04	(+/-)	% Chng	2005	2004	(+/-)	% Chng
Lower Level/Intake	30	17	13	76%	12	18	150%	70	62	8	13%
Assaultive	4	2	2	100%	2	2	100%	9	11	-2	-18%
Non- Assaultive	22	9	13	144%	5	17	340%	45	36	9	25%
Contraband	4	6	-2	-33%	5	-1	-20%	16	15	1	7%

Green: decrease Red: increase

Note: Total Primary Classifications will not equal to Total Bookings reported in Jail Population Report due to quick books.

Jail Protective Custody Report

April-05

(Page 6)

201 Poplar Stats	This Month to Last Month				Same Month Last Year			Year to Date (Last Year/This Year)			
	Apr-05	Mar-05	(+/-)	% Chng	Apr-04	(+/-)	% Chng	2005	2004	(+/-)	% Chng
Inmates Requested Protective Custody	12	7	5	71%	6	6	100%	44	29	15	52%
Pending Investigation	2	0	2	0%	1	1	100%	3	1	2	200%
Denied - Moved to General Population	1	4	-3	-75%	4	-3	-75%	17	8	9	113%
Placed on Medical Floor	3	0	3	0%	0	3	0%	5	4	1	25%
Placed on Administrative Segregation	2	1	1	100%	0	2	0%	5	1	4	400%
Request Off Protective Custody	1	0	1	0%	0	1	0%	2	3	-1	-33%
Released From Jail	3	1	2	200%	0	3	0%	10	3	7	233%
Granted Protective Custody	0	1	-1	-100%	1	-1	-100%	2	9	-7	-78%
Avg Inmates In Protective Custody	7	8	-1	-13%	8	-1	-13%	8	9	-1	-11%

Jail East Stats	This Month to Last Month				Same Month Last Year			Year to Date (Last Year/This Year)			
	Apr-05	Mar-05	(+/-)	% Chng	Apr-04	(+/-)	% Chng	2005	2004	(+/-)	% Chng
Inmates Requested Protective Custody	0	0	0	0%	0	0	0%	0	0	0	0%
Pending Investigation	0	0	0	0%	0	0	0%	0	0	0	0%
Denied - Moved to General Population	0	0	0	0%	0	0	0%	0	0	0	0%
Placed on Medical Floor	0	0	0	0%	0	0	0%	0	0	0	0%
Placed on Administrative Segregation	0	0	0	0%	0	0	0%	0	0	0	0%
Request Off Protective Custody	0	0	0	0%	0	0	0%	0	0	0	0%
Released From Jail	0	0	0	0%	0	0	0%	0	0	0	0%
Imates Granted Protective Custody	0	0	0	0%	0	0	0%	0	0	0	0%
Avg Inmates In Protective Custody	0	0	0	0%	0	0	0%	0	0	0	0%

Green: decrease Red: increase

Note: No Jail East Inmates were in Protective Custody so far this year.

Jail Special Housing Report

April-05

(Page 7)

201 Poplar Stats	This Month to Last Month				Same Month Last Year			Year to Date (Last Year/This Year)			
	Apr-05	Mar-05	(+/-)	% Chng	Apr-04	(+/-)	% Chng	2005	2004	(+/-)	% Chng
Total Inmates Admitted	59	71	-12	-17%	102	-43	-42%	319	425	-106	-25%
Admin Segregation	42	40	2	5%	43	-1	-2%	207	213	-6	-3%
Contraband Housing	4	14	-10	-71%	32	-28	-88%	48	94	-46	-49%
STG/High Profile	8	6	2	33%	17	-9	-53%	25	66	-41	-62%
Isolation	1	5	-4	-80%	4	-3	-75%	12	25	-13	-52%
Obscene Actions	4	6	-2	-33%	6	-2	-33%	27	27	0	0%
Total Inmates Released	78	80	-2	-3%	101	-23	-23%	301	402	-101	-25%
Admin Segregation	50	46	4	9%	49	1	2%	187	223	-36	-16%
Contraband Housing	13	14	-1	-7%	23	-10	-43%	54	80	-26	-33%
STG/High Profile	12	8	4	50%	12	0	0%	30	48	-18	-38%
Isolation	1	3	-2	-67%	6	-5	-83%	8	28	-20	-71%
Obscene Actions	2	9	-7	-78%	11	-9	-82%	22	23	-1	-4%

Jail East Stats	This Month to Last Month				Same Month Last Year			Year to Date (Last Year/This Year)			
	Apr-05	Mar-05	(+/-)	% Chng	Apr-04	(+/-)	% Chng	2005	2004	(+/-)	% Chng
Total Inmates Admitted	1	5	-4	-80%	13	-12	-92%	13	20	-7	-35%
Admin Segregation	1	5	-4	-80%	12	-11	-92%	12	19	-7	-37%
Contraband Housing	0	0	0	0%	1	-1	-100%	1	1	0	0%
STG/High Profile	0	0	0	0%	0	0	0%	0	0	0	0%
Isolation	0	0	0	0%	0	0	0%	0	0	0	0%
Obscene Actions	0	0	0	0%	0	0	0%	0	0	0	0%
Total Inmates Released	1	5	-4	-80%	12	-11	-92%	10	16	-6	-38%
Admin Segregation	1	5	-4	-80%	11	-10	-91%	10	15	-5	-33%
Contraband Housing	0	0	0	0%	1	-1	-100%	0	1	-1	-100%
STG/High Profile	0	0	0	0%	0	0	0%	0	0	0	0%
Isolation	0	0	0	0%	0	0	0%	0	0	0	0%
Obscene Actions	0	0	0	0%	0	0	0%	0	0	0	0%

Green: decrease Red: increase

Transitional Towers - Programs Transcend

April-05



(Page 8)

Incidents	This Month to Last Month				Same Month Last Year			Year to Date (Last Year/This Year)			
	Apr-05	Mar-05	(+/-)	% Chng	Apr-04	(+/-)	% Chng	2005	2004	(+/-)	% Chng
6th Floor	38	25	13	52%	14	24	171%	107	93	14	15%
Assaultive	1	1	0	0%	1	0	0%	4	6	-2	-33%
Non- Assaultive	37	20	17	85%	11	26	236%	94	81	13	16%
Contraband	0	4	-4	-100%	2	-2	-100%	9	6	3	50%
5th Floor	45	32	13	41%	17	28	165%	142	80	62	78%
Assaultive	3	1	2	200%	1	2	200%	6	4	2	50%
Non- Assaultive	40	28	12	43%	14	26	186%	125	69	56	81%
Contraband	2	3	-1	-33%	2	0	0%	11	7	4	57%

Programs	This Month to Last Month				Same Month Last Year			Year to Date (Last Year/This Year)			
	Apr-05	Mar-05	(+/-)	% Chng	Apr-04	(+/-)	% Chng	2005	2004	(+/-)	% Chng
Enrolled	118	139	-21	-15%	105	13	12%	508	415	93	22%
Alcohol & Drugs	32	0	32	0%	33	-1	-3%	32	70	-38	-54%
Anger Management	27	46	-19	-41%	30	-3	-10%	191	92	99	108%
DUI	16	24	-8	-33%	15	1	7%	85	64	21	33%
Basic Spanish	18	37	-19	-51%	27	-9	-33%	126	77	49	64%
MCS	0	0	0	0%	0	0	0%	0	11	-11	-100%
TSU	0	0	0	0%	0	0	0%	0	101	-101	-100%
*Life Skills	25	32	-7	-22%	0	25	0%	74	0	74	0%
Graduates	45	46	-1	-2%	39	6	15%	134	205	-71	-35%
Alcohol & Drugs	21	0	21	0%	13	8	62%	21	17	4	24%
Anger Management	8	20	-12	-60%	15	-7	-47%	62	53	9	17%
DUI	6	13	-7	-54%	11	-5	-45%	28	34	-6	-18%
Basic Spanish	0	0	0	0%	0	0	0%	0	0	0	0%
MCS	0	0	0	0%	0	0	0%	0	0	0	0%
TSU	0	0	0	0%	0	0	0%	0	101	-101	-100%
*Life Skills	10	13	-3	-23%	0	10	0%	23	0	23	0%

Religious Services	This Month to Last Month				Same Month Last Year			Year to Date (Last Year/This Year)			
	Apr-05	Mar-05	(+/-)	% Chng	Apr-04	(+/-)	% Chng	2005	2004	(+/-)	% Chng
Total Worship Participants	588	476	112	24%	215	373	173%	1897	704	1193	169%
Chaplain Worship	317	192	125	65%	74	243	328%	1010	324	686	212%
Volunteer (Christian, Muslim) Worship	271	284	-13	-5%	141	130	92%	887	380	507	133%

Green: decrease Red: increase

*Life Skills is a new program on 5th and 6th floors in May 2004.

Hopeville North and South

April-05

(Page 9)

Incidents	This Month to Last Month				Same Month Last Year			Year to Date (Last Year/This Year)			
	Apr-05	Mar-05	(+/-)	% Chng	Apr-04	(+/-)	% Chng	2005	2004	(+/-)	% Chng
4th Floor Unit	126	109	17	16%	54	72	133%	489	409	80	20%
Assaultive	9	13	-4	-31%	13	-4	-31%	51	49	2	4%
Non- Assaultive	113	83	30	36%	38	75	197%	400	333	67	20%
Contraband	4	13	-9	-69%	3	1	33%	38	27	11	41%

Programs	This Month to Last Month				Same Month Last Year			Year to Date (Last Year/This Year)			
	Apr-05	Mar-05	(+/-)	% Chng	Apr-04	(+/-)	% Chng	2005	2004	(+/-)	% Chng
Enrolled	325	319	6	2%	192	133	69%	1312	411	901	219%
Alcohol & Drugs	25	23	2	9%	26	-1	-4%	111	58	53	91%
Anger Management	150	148	2	1%	62	88	142%	583	141	442	313%
Moral Reconciliation Therapy	150	148	2	1%	62	88	142%	598	142	456	321%
MCS	0	0	0	0%	16	-16	-100%	20	16	4	25%
TSU	0	0	0	0%	26	-26	-100%	0	54	-54	-100%
Graduates	22	0	22	0%	73	-51	-70%	84	125	-41	-33%
Alcohol & Drugs	22	0	22	0%	19	3	16%	44	25	19	76%
Anger Management	0	0	0	0%	28	-28	-100%	40	46	-6	-13%
Moral Reconciliation Therapy	0	0	0	0%	0	0	0%	0	0	0	0%
MCS	0	0	0	0%	0	0	0%	0	0	0	0%
TSU	0	0	0	0%	26	-26	-100%	0	54	-54	-100%

Religious Services	This Month to Last Month				Same Month Last Year			Year to Date (Last Year/This Year)			
	Apr-05	Mar-05	(+/-)	% Chng	Apr-04	(+/-)	% Chng	2005	2004	(+/-)	% Chng
Total Worship Participants	474	458	16	3%	461	13	3%	1804	1373	431	31%
Chaplain Worship	89	71	18	25%	303	-214	-71%	428	635	-207	-33%
Volunteer (Christian, Muslim) Worship	385	387	-2	-1%	158	227	144%	1376	738	638	86%

Green: decrease Red: increase

Note: Muslim Volunteer Worship was broken down by floors in March 04 and total Muslim Worship from all floors was included in 4th floor Volunteer Worship before March 04.

Poplar Place

April-05



(Page 10)

Incidents	This Month to Last Month				Same Month Last Year			Year to Date (Last Year/This Year)			
	Apr-05	Mar-05	(+/-)	% Chng	Apr-04	(+/-)	% Chng	2005	2004	(+/-)	% Chng
3rd Floor	116	113	3	3%	40	76	190%	445	280	165	59%
Assaultive	3	3	0	0%	3	0	0%	18	31	-13	-42%
Non- Assaultive	104	96	8	8%	34	70	206%	391	222	169	76%
Contraband	9	14	-5	-36%	3	6	200%	36	27	9	33%

Programs	This Month to Last Month				Same Month Last Year			Year to Date (Last Year/This Year)			
	Apr-05	Mar-05	(+/-)	% Chng	Apr-04	(+/-)	% Chng	2005	2004	(+/-)	% Chng
Enrolled	222	175	47	27%	73	149	204%	604	272	332	122%
Alcohol & Drugs	76	24	52	217%	35	41	117%	144	70	74	106%
Anger Management	52	59	-7	-12%	0	52	0%	157	45	112	249%
MCS	24	24	0	0%	0	24	0%	86	17	69	406%
Moral Reconciliation Therapy	70	68	2	3%	0	70	0%	217	0	217	0%
Graduates	42	0	42	0%	50	-8	-16%	45	71	-26	-37%
Alcohol & Drugs	26	0	26	0%	12	14	117%	26	12	14	117%
Anger Management	16	0	16	0%	0	16	0%	19	6	13	217%
MCS	0	0	0	0%	0	0	0%	0	0	0	0%
Moral Reconciliation Therapy	0	0	0	0%	0	0	0%	0	0	0	0%

Religious Services	This Month to Last Month				Same Month Last Year			Year to Date (Last Year/This Year)			
	Apr-05	Mar-05	(+/-)	% Chng	Apr-04	(+/-)	% Chng	2005	2004	(+/-)	% Chng
Total Worship Participants	840	877	-37	-4%	580	260	45%	3510	1635	1875	115%
Chaplain Worship	275	225	50	22%	231	44	19%	1204	928	276	30%
Volunteer (Christian, Muslim) Worship	565	652	-87	-13%	349	216	62%	2306	707	1599	226%

Green: decrease Red: increase

Note: Moral Reconciliation Therapy program started on 3rd floor in June 2004.

Note: Life Skills, Stop the Violence and Keeping it Real are no longer offered on Poplar Place in 2005. Total inmates enrolled last year is still included in Enrolled for year to date 2004.

Poplar Place Extended

April-05



(Page 11)

Incidents	This Month to Last Month				Same Month Last Year			Year to Date (Last Year/This Year)			
	Apr-05	Mar-05	(+/-)	% Chng	Apr-04	(+/-)	% Chng	2005	2004	(+/-)	% Chng
Annex	25	16	9	56%	17	8	47%	64	71	-7	-10%
Assaultive	2	3	-1	-33%	1	1	100%	5	7	-2	-29%
Non- Assaultive	18	9	9	100%	11	7	64%	41	52	-11	-21%
Contraband	5	4	1	25%	5	0	0%	18	12	6	50%

Programs	This Month to Last Month				Same Month Last Year			Year to Date (Last Year/This Year)			
	Apr-05	Mar-05	(+/-)	% Chng	Apr-04	(+/-)	% Chng	2005	2004	(+/-)	% Chng
Enrolled	381	314	67	21%	341	40	12%	1284	1106	178	16%
Alcohol & Drugs	34	42	-8	-19%	52	-18	-35%	148	200	-52	-26%
Anger Management	43	20	23	115%	45	-2	-4%	118	200	-82	-41%
Life Skills	30	45	-15	-33%	80	-50	-63%	150	251	-101	-40%
DUI	18	19	-1	-5%	26	-8	-31%	90	115	-25	-22%
GED	36	48	-12	-25%	55	-19	-35%	151	121	30	25%
Stop the Violence	0	0	0	0%	59	-59	-100%	0	186	-186	-100%
MCS	12	12	0	0%	8	4	50%	52	17	35	206%
Moral Reconciliation Therapy	183	128	55	43%	0	183	0%	550	0	550	0%
TSU	0	0	0	0%	16	-16	-100%	0	16	-16	-100%
Commitment to Change	25	0	25	0%	0	25	0%	25	0	25	0%
Graduates	52	0	52	0%	182	-130	-71%	92	345	-253	-73%
Alcohol & Drugs	30	0	30	0%	47	-17	-36%	44	78	-34	-44%
Anger Management	13	0	13	0%	35	-22	-63%	13	82	-69	-84%
Life Skills	9	0	9	0%	50	-41	-82%	26	72	-46	-64%
DUI	0	0	0	0%	14	-14	-100%	9	49	-40	-82%
GED	0	0	0	0%	0	0	0%	0	0	0	0%
Stop the Violence	0	0	0	0%	20	-20	-100%	0	48	-48	-100%
MCS	0	0	0	0%	0	0	0%	0	0	0	0%
Moral Reconciliation Therapy	0	0	0	0%	0	0	0%	0	0	0	0%
TSU	0	0	0	0%	16	-16	-100%	0	16	-16	-100%
Commitment to Change	0	0	0	0%	0	0	0%	0	0	0	0%

Religious Services	This Month to Last Month				Same Month Last Year			Year to Date (Last Year/This Year)			
	Apr-05	Mar-05	(+/-)	% Chng	Apr-04	(+/-)	% Chng	2005	2004	(+/-)	% Chng
Total Worship Participants	804	746	58	8%	570	234	41%	2635	1577	1058	67%
Chaplain Worship	105	97	8	8%	31	74	239%	390	193	197	102%
Volunteer (Christian, Muslim) Worship	699	649	50	8%	539	160	30%	2245	1384	861	62%

(Green: decrease Red: increase)

Note: Moral Reconciliation Therapy program started in Annex in July 2004.

Note: Commitment to Change is a new program in Annex started in April 2005.

New Chicago

April-05



(Page 12)

Incidents	This Month to Last Month				Same Month Last Year			Year to Date (Last Year/This Year)			
	Apr-05	Mar-05	(+/-)	% Chng	Apr-04	(+/-)	% Chng	2005	2004	(+/-)	% Chng
2nd Floor	61	63	-2	-3%	25	36	144%	202	126	76	60%
Assaultive	8	9	-1	-11%	6	2	33%	30	39	-9	-23%
Non- Assaultive	49	46	3	7%	17	32	188%	152	83	69	83%
Contraband	4	8	-4	-50%	2	2	100%	20	4	16	400%

Programs	This Month to Last Month				Same Month Last Year			Year to Date (Last Year/This Year)			
	Apr-05	Mar-05	(+/-)	% Chng	Apr-04	(+/-)	% Chng	2005	2004	(+/-)	% Chng
2nd Floor Enrolled	44	43	1	2%	57	-13	-23%	165	170	-5	-3%
Alcohol & Drugs	5	4	1	25%	6	-1	-17%	14	16	-2	-13%
Anger Management	16	15	1	7%	10	6	60%	61	48	13	27%
Life Skills	8	8	0	0%	12	-4	-33%	34	43	-9	-21%
Stop the Violence	0	0	0	0%	10	-10	-100%	7	41	-34	-83%
MCS	0	0	0	0%	4	-4	-100%	2	7	-5	-71%
TSU	0	0	0	0%	15	-15	-100%	0	15	-15	-100%
Moral Reconciliation Therapy	15	16	-1	-6%	0	15	0%	47	0	47	0%
2nd Floor Graduates	15	8	7	88%	40	-25	-63%	23	64	-41	-64%
Alcohol & Drugs	0	0	0	0%	4	-4	-100%	0	5	-5	-100%
Anger Management	11	0	11	0%	6	5	83%	11	17	-6	-35%
Life Skills	4	8	-4	-50%	7	-3	-43%	12	12	0	0%
Stop the Violence	0	0	0	0%	8	-8	-100%	0	15	-15	-100%
MCS	0	0	0	0%	0	0	0%	0	0	0	0%
TSU	0	0	0	0%	15	-15	-100%	0	15	-15	-100%
Moral Reconciliation Therapy	0	0	0	0%	0	0	0%	0	0	0	0%

Religious Services	This Month to Last Month				Same Month Last Year			Year to Date (Last Year/This Year)			
	Apr-05	Mar-05	(+/-)	% Chng	Apr-04	(+/-)	% Chng	2005	2004	(+/-)	% Chng
Total Worship Participants	184	128	56	44%	220	-36	-16%	689	768	-79	-10%
Chaplain Worship	35	52	-17	-33%	211	-176	-83%	292	742	-450	-61%
Volunteer (Christian, Muslim) Worship	149	76	73	96%	9	140	1556%	397	26	371	1427%

Green: decrease Red: increase

Note: Moral Reconciliation Therapy program started on 2nd Floor in July 2004.

Juvenile New Chicago

April-05



(Page 13)

Incidents	This Month to Last Month				Same Month Last Year			Year to Date (Last Year/This Year)			
	Apr-05	Mar-05	(+/-)	% Chng	Apr-04	(+/-)	% Chng	2005	2004	(+/-)	% Chng
Juvenile Pods	11	18	-7	-39%	5	6	120%	60	21	39	186%
Assaultive	4	5	-1	-20%	0	4	0%	20	3	17	567%
Non- Assaultive	7	13	-6	-46%	4	3	75%	40	16	24	150%
Contraband	0	0	0	0%	1	-1	-100%	0	2	-2	-100%

Programs	This Month to Last Month				Same Month Last Year			Year to Date (Last Year/This Year)			
	Apr-05	Mar-05	(+/-)	% Chng	Apr-04	(+/-)	% Chng	2005	2004	(+/-)	% Chng
Juvenile Enrolled	47	52	-5	-10%	20	27	135%	189	71	118	166%
Anger Management	14	14	0	0%	6	8	133%	55	22	33	150%
Life Skills (Read to Succeed)	0	4	-4	-100%	9	-9	-100%	13	29	-16	-55%
Stop the Violence	0	0	0	0%	1	-1	-100%	0	16	-16	-100%
MCS	18	18	0	0%	4	14	350%	60	4	56	1400%
Moral Reconciliation Therapy	15	16	-1	-6%	0	15	0%	61	0	61	0%
Juvenile Graduates	11	4	7	175%	15	-4	-27%	15	33	-18	-55%
Anger Management	11	0	11	0%	6	5	83%	11	12	-1	-8%
Life Skills (Read to Succeed)	0	4	-4	-100%	8	-8	-100%	4	15	-11	-73%
Stop the Violence	0	0	0	0%	1	-1	-100%	0	6	-6	-100%
MCS	0	0	0	0%	0	0	0%	0	0	0	0%
Moral Reconciliation Therapy	0	0	0	0%	0	0	0%	0	0	0	0%

Religious Services	This Month to Last Month				Same Month Last Year			Year to Date (Last Year/This Year)			
	Apr-05	Mar-05	(+/-)	% Chng	Apr-04	(+/-)	% Chng	2005	2004	(+/-)	% Chng
Total Worship Participants	69	57	12	21%	67	2	3%	284	238	46	19%
Chaplain Worship	36	31	5	16%	35	1	3%	125	129	-4	-3%
Volunteer (Christian, Muslim) Worship	33	26	7	27%	32	1	3%	159	109	50	46%

Green: decrease Red: increase

Note: Moral Reconciliation Therapy program started on 2nd Floor in July 2004.

Stone Bay

April-05

(Page 14)

Incidents	This Month to Last Month				Same Month Last Year			Year to Date (Last Year/This Year)			
	Apr-05	Mar-05	(+/-)	% Chng	Apr-04	(+/-)	% Chng	2005	2004	(+/-)	% Chng
1st Floor	44	57	-13	-23%	57	-13	-23%	269	283	-14	-5%
Assaultive	5	10	-5	-50%	5	0	0%	35	25	10	40%
Non- Assaultive	34	38	-4	-11%	50	-16	-32%	214	235	-21	-9%
Contraband	5	9	-4	-44%	2	3	150%	20	23	-3	-13%

Green: decrease Red: increase

Jail East

April-05

(Page 15)

Incidents	This Month to Last Month				Same Month Last Year			Year to Date (Last Year/This Year)			
	Apr-05	Mar-05	(+/-)	% Chng	Apr-04	(+/-)	% Chng	2005	2004	(+/-)	% Chng
Jail East	27	26	-1	4%	27	0	0%	101	92	9	10%
Assaultive	2	4	-2	-50%	6	-4	-67%	14	8	6	75%
Non- Assaultive	19	21	-2	-10%	20	-1	-5%	74	77	-3	-4%
Contraband	6	1	5	500%	1	5	500%	13	7	6	86%

Programs	This Month to Last Month				Same Month Last Year			Year to Date (Last Year/This Year)			
	Apr-05	Mar-05	(+/-)	% Chng	Apr-04	(+/-)	% Chng	2005	2004	(+/-)	% Chng
Enrolled	177	168	9	5%	193	-16	-8%	936	347	589	170%
Moral Reconciliation Therapy	19	10	9	90%	60	-41	-68%	62	60	2	3%
Alcohol and Drug	21	23	-2	-9%	73	-52	-71%	106	95	11	12%
Addictive Behaviors	47	32	15	47%	12	35	292%	122	109	13	12%
*Commitment to Change	44	41	3	7%	27	17	63%	283	27	256	948%
**Literacy	12	19	-7	-37%	0	12	0%	63	0	63	0%
***Job Readiness	7	9	-2	-22%	0	7	0%	47	0	47	0%
Sister to Sister	0	26	-26	-100%	21	-21	-100%	176	56	120	214%
****Parenting	27	8	19	238%	0	27	0%	77	0	77	0%
Graduates	50	64	-14	-22%	0	50	0%	114	0	114	0%
MRT	0	0	0	0%	0	0	0%	0	0	0	0%
Alcohol and Drug	0	0	0	0%	0	0	0%	0	0	0	0%
Addictive Behaviors	0	0	0	0%	0	0	0%	0	0	0	0%
*Commitment to Change	31	38	-7	-18%	0	31	0%	69	0	69	0%
**Literacy	12	19	-7	-37%	0	12	0%	31	0	31	0%
***Job Readiness	7	0	7	0%	0	7	0%	7	0	7	0%
Sister to Sister	0	0	0	0%	0	0	0%	0	0	0	0%
****Parenting	0	7	-7	-100%	0	0	0%	7	0	7	0%
Total Participants	727	1282	-555	-43%	329	398	121%	3532	1113	2419	217%
Empowerment from Brother	97	60	37	62%	257	-160	-62%	220	849	-629	-74%
Project Learn (PreGED)	39	56	-17	-30%	72	-33	-46%	122	264	-142	-54%
****Keeping It Real	415	899	-484	-54%	0	415	0%	2540	0	2540	0%
****Story Book	39	24	15	63%	0	39	0%	10	0	10	0%
**Health & Fitness/Aerobics/Wellness Ini.	105	156	-51	-33%	0	105	0%	406	0	406	0%
Creative Awareness	15	31	-16	-52%	0	15	0%	46	0	46	0%
HIV Awareness	16	56	-40	-71%	0	16	0%	72	0	72	0%
Cultural Awareness	1	0	1	0%	0	1	0%	1	0	1	0%

Religious Services	This Month to Last Month				Same Month Last Year			Year to Date (Last Year/This Year)			
	Apr-05	Mar-05	(+/-)	% Chng	Apr-04	(+/-)	% Chng	2005	2004	(+/-)	% Chng
Total Worship Participants	886	928	-42	-5%	980	-94	-10%	3212	3158	54	2%
Chaplain Worship	338	409	-71	-17%	281	57	20%	1103	852	251	29%
Volunteer (Christian, Muslim) Worship	548	519	29	6%	699	-151	-22%	2109	2306	-197	-9%

Green: decrease Red: increase

*Commitment to Change is a new program started in April 2004.

***Aerobics and Job Readiness are new programs in August 2004.

****Story Book and Parenting are new programs started in October 2004.

Project Learn (PreGED) consists of Project Learn/Math, Project Critical Thinking and GED. These programs were combined in July 2004.

Numbers reported for January and February for Empowerment from Brother and Keeping it Real were reported in March 2005.

** Sewing, Literacy and Health and Fitness are new programs in May 2004.

****Keeping it Real is new program started in September 2004.

All Awareness programs are new in March 2005.



Jail DRT Report

April-05



(Page 16)

Jail DRT	This Month to Last Month				Same Month Last Year			Year to Date (Last Year/This Year)			
	Apr-05	Mar-05	(+/-)	% Chng	Apr-04	(+/-)	% Chng	2005	2004	(+/-)	% Chng
Callouts	1	4	-3	-75%	1	0	0%	33	7	26	371%
6 - 2 Shift	0	1	-1	-100%	0	0	0%	15	4	11	275%
2 - 10 Shift	0	2	-2	-100%	1	-1	-100%	12	2	10	500%
10- 6 Shift	1	1	0	0%	0	1	0%	6	1	5	500%
Referrals / Escorts	632	607	25	4%	494	138	28%	2530	2042	488	24%
6 - 2 Shift	254	248	6	2%	209	45	22%	1023	727	296	41%
2 - 10 Shift	347	312	35	11%	247	100	40%	1326	1174	152	13%
10- 6 Shift	31	47	-16	-34%	38	-7	-18%	181	141	40	28%
Areas Patrolled	1158	1125	33	3%	991	167	17%	4565	3880	685	18%
6 - 2 Shift	394	342	52	15%	246	148	60%	1364	957	407	43%
2 - 10 Shift	468	451	17	4%	384	84	22%	1816	1527	289	19%
10- 6 Shift	296	332	-36	-11%	361	-65	0%	1385	1396	-11	-1%
DRT Shakedowns	3262	2945	317	11%	1975	1287	65%	11763	7718	4045	52%
Pat Searches	1978	1825	153	8%	1410	568	40%	7280	5485	1795	33%
Random (Cell Searches)	1239	1097	142	13%	532	707	133%	4372	2071	2301	111%
Random (Entire Pod)	37	5	32	640%	28	9	32%	62	112	-50	-45%
Scheduled (Entire Pod)	6	18	-12	-67%	4	2	50%	43	42	1	2%
Intel	2	0	2	0%	1	1	100%	6	8	-2	-25%
JE Shakedowns	341	276	65	24%	310	31	10%	1112	1119	-7	-1%
Scheduled (Entire Area)	27	18	9	50%	64	-37	-58%	94	165	-71	-43%
Random	314	258	56	22%	240	74	31%	1018	940	78	8%
Partial	0	0	0	0%	6	-6	-100%	0	14	-14	-100%
Mandown Response	1	0	1	0%	1	0	0%	1	1	0	0%
Codes (Red,White,Blue) Response	84	78	6	8%	62	22	35%	299	258	41	16%
K-9 Searches	613	597	16	3%	0	613	0%	2170	676	1494	221%

Green: decrease Red: increase

Jail GIB Report

April-05

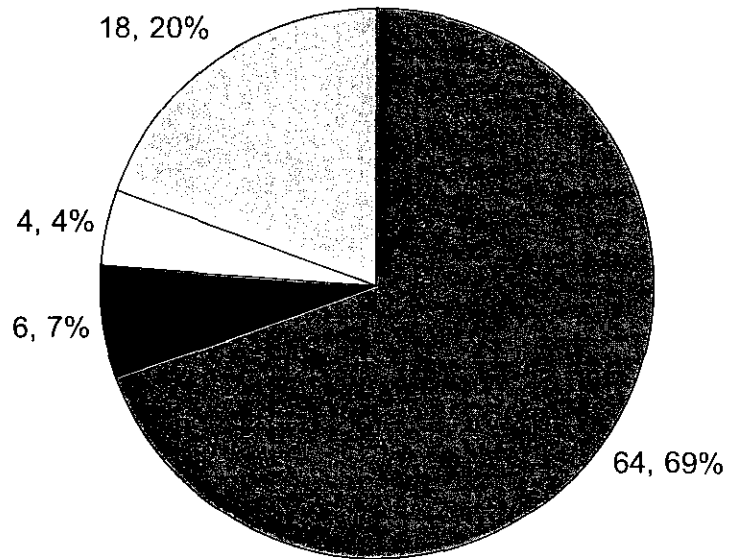
(Page 17)

Jail GIB Stats	This Month to Last Month				Same Month Last Year			Year to Date (Last Year/This Year)			
	Apr-05	Mar-05	(+/-)	% Chng	Apr-04	(+/-)	% Chng	2005	2004	(+/-)	% Chng
New Cases Opened	64	77	-13	-17%	62	2	3%	315	260	55	21%
Total Cases Reviewed	1004	1129	-125	-11%	729	275	38%	4080	3674	406	11%
Cases Disposed	108	72	36	50%	78	30	38%	452	480	-28	-6%
Unfounded	15	25	-10	-40%	10	5	50%	142	130	12	9%
Referred IAB	1	2	-1	-50%	0	1	0%	11	5	6	120%
Referred GIB	0	0	0	0%	2	-2	-100%	1	2	-1	-50%
Referred GIU	0	0	0	0%	0	0	0%	0	0	0	0%
Cases Reviewed by DAG/JC	92	45	47	104%	66	26	39%	298	343	-45	-13%
Cleared by Arrest	64	35	29	83%	52	12	23%	196	222	-26	-12%
Warrant Issued	6	1	5	500%	4	2	50%	18	17	1	6%
Denied by Judicial Commissioner	4	0	4	0%	0	4	0%	6	2	4	200%
Denied by DAG	18	9	9	100%	10	8	80%	78	102	-24	-24%
Disposition	61	36	25	69%	0	61	0%	196	0	196	0%
Active	20	11	9	82%	0	20	0%	63	0	63	0%
Nolle Prosequi	34	18	16	89%	0	34	0%	98	0	98	0%
Convicted	7	7	0	0%	0	7	0%	35	0	35	0%

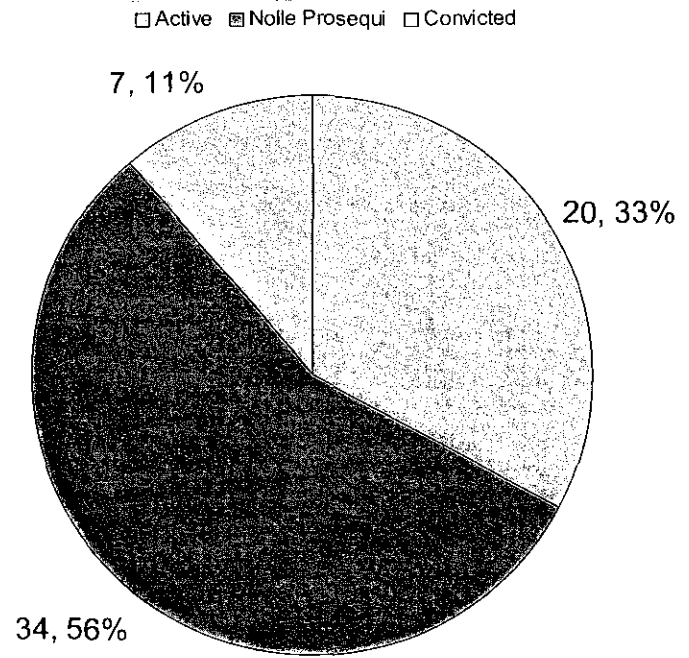
Green: decrease Red: increase

Note: Started collecting statistics for Disposition in December 2004.

Cases Reviewed by DAG/JC



Disposition



■ Cleared by Arrest ■ Warrant Issued □ Denied by Judicial Commissioner □ Denied by DAG

Jail Inmate Disciplinary Data April-05

(Page 18)

Jail Disciplinary Stats	This Month to Last Month				Same Month Last Year			Year to Date (Last Year/This Year)			
	Apr-05	Mar-05	(+/-)	% Chng	Apr-04	(+/-)	% Chng	2005	2004	(+/-)	% Chng
Discipline Scheduled	205	251	-46	-18%	182	23	13%	899	773	126	16%
Disciplinary Convictions	196	347	-151	-44%	64	132	206%	1055	374	681	182%
Sentenced Deadlock	147	311	-164	-53%	47	100	213%	900	253	647	256%
Probation	30	31	-1	-3%	14	16	114%	103	103	0	0%
Not Guilty	19	5	14	280%	3	16	533%	52	18	34	189%
Dismissals	42	70	-28	-40%	29	13	45%	245	136	109	80%
Due to Procedural Violations	2	1	1	100%	0	2	0%	11	0	11	0%
Victims	5	18	-13	-72%	8	-3	-38%	43	32	11	34%
Released	30	46	-16	-35%	19	11	58%	177	79	98	124%
Medical	5	5	0	0%	2	3	150%	14	25	-11	-44%
Informal Sanctions	105	95	10	11%	51	54	106%	348	325	23	7%
6th Floor	6	3	3	100%	4	2	50%	22	35	-13	-37%
5th Floor	7	16	-9	-56%	1	6	600%	28	32	-4	-13%
4th Floor	53	26	27	104%	10	43	430%	140	84	56	67%
3rd Floor	10	22	-12	-55%	7	3	43%	60	72	-12	-17%
2nd Floor	19	16	3	19%	11	8	73%	58	33	25	76%
1st Floor	5	6	-1	-17%	18	-13	-72%	29	60	-31	-52%
Lower Level	5	2	3	150%	0	5	0%	7	9	-2	-22%
Annex	0	4	-4	-100%	0	0	0%	4	0	4	0%

Green: decrease Red: increase

Jail Gang Report

April-05

(Page 19)

Jail Gang Stats	This Month to Last Month				Same Month Last Year			Year to Date (Last Year/This Year)			
	Apr-05	Mar-05	(+/-)	% Chng	Apr-04	(+/-)	% Chng	2005	2004	(+/-)	% Chng
Gang Involved Incidents	68	84	-16	-19%	94	-26	-28%	395	392	3	1%
201 Poplar	68	84	-16	-19%	94	-26	-28%	395	390	5	1%
Jail East	0	0	0	0%	0	0	0%	0	2	-2	-100%
Gang Related Incidents	3	4	-1	-25%	4	-1	-25%	18	16	2	13%
201 Poplar	3	4	-1	-25%	4	-1	-25%	18	16	2	13%
Jail East	0	0	0	0%	0	0	0%	0	0	0	0%
Total Incidents Reviewed	228	350	-122	-35%	204	24	12%	1075	812	263	32%
Total Violent Incidents Reviewed	70	106	-36	-34%	0	70	0%	297	0	297	0%
Assault to Staff	11	24	-13	-54%	0	11	0%	62	0	62	0%
Spit/Urine/Feces/Food Staff	6	11	-5	-45%	0	6	0%	24	0	24	0%
Threat to Staff by Inmate	27	32	-5	-16%	0	27	0%	98	0	98	0%
Inmate Assault	7	7	0	0%	0	7	0%	28	0	28	0%
Inmate Fight	19	32	-13	-41%	0	19	0%	85	0	85	0%
Total Gang Validations	74	25	49	196%	63	11	17%	297	52	245	471%
Intake Validated	67	21	46	219%	0	67	0%	214	0	214	0%
Facility Validated	7	4	3	75%	0	7	0%	83	0	83	0%
Weekly Avg. Known Gang Members	339	332	7	2%	238	101	42%	330	223	107	48%
Gangster Disciple	155	138	17	12%	118	37	31%	142	102	40	39%
Vice Lords	82	66	16	24%	57	25	44%	71	54	17	32%
Crips	50	51	-1	-2%	40	10	25%	58	37	21	56%
Others	52	77	-25	-32%	23	29	126%	60	31	29	95%
Security Threat Group	52	64	-12	-19%	0	52	0%	62	0	62	0%

Green: decrease Red: increase

Note: Started collecting statistics for Total Gang Validations in March 2004.

Note: Started collecting statistics for Total Violent Incidents Reviewed in January 2005.

Note: Started collecting statistics for Security Threat Group in January 2005.

Note: Total Gang Validations were broken down into Intake and Facility in January 2005.

Jail Grievance Report

April-05

(Page 20)

Jail Grievances	This Month to Last Month				Same Month Last Year			Year to Date (Last Year/This Year)			
	Apr-05	Mar-05	(+/-)	% Chng	Apr-04	(+/-)	% Chng	2005	2004	(+/-)	% Chng
Total Grievances Received	471	512	-41	-8%	717	-246	-34%	2101	2865	-764	-27%
1st Floor	71	101	-30	-30%	172	-101	-59%	332	480	-148	-31%
2nd Floor	75	54	21	39%	95	-20	-21%	299	443	-144	-33%
3rd Floor	101	97	4	4%	122	-21	-17%	362	575	-213	-37%
4th Floor	124	158	-34	-22%	191	-67	-35%	718	625	93	15%
5th Floor	31	23	8	35%	60	-29	-48%	93	182	-89	-49%
6th Floor	26	11	15	136%	17	9	53%	96	157	-61	-39%
Annex	40	24	16	67%	19	21	111%	111	143	-32	-22%
Lower Level	2	33	-31	-94%	5	-3	-60%	53	104	-51	-49%
201 Poplar	470	501	-31	-6%	681	-211	-31%	2064	2717	-653	-24%
Staff Actions	246	271	-25	-9%	443	-197	-44%	1300	1603	-303	-19%
Medical	107	110	-3	-3%	105	2	2%	373	454	-81	-18%
Food Services	11	12	-1	-8%	20	-9	-45%	40	115	-75	-65%
Programs	23	32	-9	-28%	15	8	53%	61	87	-26	-30%
Maintenance	8	4	4	100%	7	1	14%	33	36	-3	-8%
Laundry	11	15	-4	-27%	11	0	0%	53	52	1	2%
Religious	4	9	-5	-56%	5	-1	-20%	22	27	-5	-19%
Commissary	14	10	4	40%	10	4	40%	48	52	-4	-8%
Swanson (Mail, Property and Accounting)	34	29	5	17%	46	-12	-26%	102	186	-84	-45%
Hygiene	10	8	2	25%	17	-7	-41%	26	93	-67	-72%
Heating/Cooling/Ventilation	2	1	1	100%	2	0	0%	6	12	-6	-50%
Jail East	1	11	-10	-91%	36	-35	-97%	37	148	-111	-75%
Staff Actions	0	4	-4	-100%	15	-15	-100%	19	86	-67	-78%
Medical	0	5	-5	-100%	15	-15	-100%	10	31	-21	-68%
Food Services	0	0	0	0%	0	0	0%	0	10	-10	-100%
Programs	0	0	0	0%	1	-1	-100%	0	4	-4	-100%
Maintenance	0	0	0	0%	0	0	0%	0	3	-3	-100%
Laundry	0	1	-1	-100%	2	-2	-100%	1	5	-4	-80%
Religious	0	0	0	0%	1	-1	-100%	0	2	-2	-100%
Commissary	1	0	1	0%	0	1	0%	1	1	0	0%
Swanson (Mail, Property and Accounting)	0	1	-1	-100%	1	-1	-100%	5	5	0	0%
Hygiene	0	0	0	0%	1	-1	-100%	0	1	-1	-100%
Heating/Cooling/Ventilation	0	0	0	0%	0	0	0%	0	0	0	0%
Open/Unresolved Grievances Over 24 Days	0	0	0	0%	34	-34	-100%	2	270	-268	-99%

Green: decrease Red: increase

Open/Unresolved Grievances Over 24 Days include grievances that were under appeal for data collected before February 2004.

Due to policy changed, Open/Unresolved Grievances Over 30 Days was changed to 24 days in July 2004.

Programs grievances include legal room scheduling, television scheduling, recreations scheduling and counselors.

Jail Programs Report April-05

(Page 21)

201 Poplar Stats	This Month to Last Month				Same Month Last Year			Year to Date (Last Year/This Year)			
	Apr-05	Mar-05	(+/-)	% Chng	Apr-04	(+/-)	% Chng	2005	2004	(+/-)	% Chng
Total Enrolled in Programs	1047	1036	11	1%	788	259	33%	3970	1451	2519	174%
Alcohol and Drugs	122	93	29	31%	152	-30	-20%	399	301	98	33%
GED	36	48	-12	-25%	55	-19	-35%	151	72	79	110%
*Anger Management	302	302	0	0%	153	149	97%	1165	290	875	302%
MCS Education Program	54	54	0	0%	32	22	69%	220	72	148	206%
*Life Skill	63	89	-26	-29%	101	-38	-38%	271	197	74	38%
DUI	34	43	-9	-21%	41	-7	-17%	175	93	82	88%
Moral Reconciliation Therapy	418	360	58	16%	62	356	574%	1412	90	1322	1469%
*Stop the Violence	0	0	0	0%	70	-70	-100%	7	127	-120	-94%
Cross Cultural (Spanish)	18	37	-19	-51%	27	-9	-33%	126	45	81	180%
Special Programs	0	10	-10	-100%	95	-95	-100%	44	164	-120	-73%
Total Number of Graduates	187	58	129	222%	399	-212	-53%	393	453	-60	-13%
Visits to Law Library	320	451	-131	-29%	716	-396	-55%	1474	1423	51	4%
Assessments	166	153	13	8%	391	-225	-58%	924	1104	-180	-16%
Total Number of Volunteers	45	45	0	0%	45	0	0%	178	89	89	100%
Religious Volunteers	43	43	0	0%	41	2	5%	170	81	89	110%
Program Volunteers	2	2	0	0%	4	-2	-50%	8	8	0	0%
Total Volunteer Hours	102	102	0	0%	107	-4.5	-4%	406	216	190	88%
Religious Volunteers	82	82	0	0%	79	3.5	4%	326	160	166	103%
Program Volunteers	20	20	0	0%	28	-8	-29%	80	56	24	43%

Jail East Stats	This Month to Last Month				Same Month Last Year			Year to Date (Last Year/This Year)			
	Apr-05	Mar-05	(+/-)	% Chng	Apr-04	(+/-)	% Chng	2005	2004	(+/-)	% Chng
Total Enrolled in Programs	177	168	9	5%	193	-16	-8%	936	243	693	285%
Moral Reconciliation Therapy	19	10	9	90%	60	-41	-68%	62	60	2	3%
Alcohol and Drug	21	23	-2	-9%	73	-52	-71%	106	95	11	12%
Addictive Behaviors	47	32	15	47%	12	35	292%	122	40	82	205%
Commitment to Change	44	41	3	7%	27	17	63%	283	27	256	948%
Literacy	12	19	-7	-37%	0	12	0%	63	0	63	0%
Job Readiness	7	9	-2	-22%	0	7	0%	47	0	47	0%
Sister to Sister	0	26	-26	-100%	21	-21	-100%	176	21	155	738%
Parenting	27	8	19	238%	0	27	0%	77	0	77	0%
Total Number of Graduates	50	64	-14	-22%	0	50	0%	114	0	114	0%
Total Participants	727	1282	-555	-43%	318	409	129%	3532	618	2914	472%
Visits to Law Library	72	84	-12	-14%	72	0	0%	275	102	173	170%
Assessments	8	26	-18	-69%	64	-56	-88%	109	159	-50	-31%
Number of Volunteers	25	25	0	0%	25	0	0%	102	49	53	108%
Religious Volunteers	16	16	0	0%	19	-3	-16%	66	36	30	83%
Program Volunteers	9	9	0	0%	6	3	50%	36	13	23	177%
Total Volunteer Hours	73	73	0	0%	66	7	11%	292	130	163	125%
Religious Volunteers	28	28	0	0%	28	0	0%	112	54	59	109%
Program Volunteers	45	45	0	0%	38	7	18%	180	76	104	137%

Green: decrease Red: increase

*Total Enrolled in Program in 201 Poplar includes juvenile participants.

Note: Special Programs for 201 Poplar include TSU, Annex Choir and all programs not listed individually.

Jail Contraband Report

April-05

(Page 22)

Jail Contraband	This Month to Last Month				Same Month Last Year			Year to Date (Last Year/This Year)			
	Apr-05	Mar-05	(+/-)	% Chng	Apr-04	(+/-)	% Chng	2005	2004	(+/-)	% Chng
Total Contraband	40	50	-10	-20%	15	25	167%	184	104	80	77%
201 Poplar Contraband	34	49	-15	-31%	15	19	127%	170	96	74	77%
Tobacco	2	16	-14	-88%	6	-4	-67%	46	52	-6	-12%
Marijuana	2	4	-2	-50%	2	0	0%	13	18	-5	-28%
Crack/Cocaine	2	1	1	100%	3	-1	-33%	6	9	-3	-33%
Prescribed Meds	1	2	-1	-50%	0	1	0%	9	4	5	125%
Weapons	7	2	5	250%	0	7	0%	13	6	7	117%
Money	6	12	-6	-50%	3	3	100%	21	6	15	250%
Other	14	12	2	17%	1	13	1300%	62	1	61	6100%
Jail East Contraband	6	1	5	500%	0	6	0%	14	8	6	75%
Tobacco	2	0	2	0%	0	2	0%	4	1	3	300%
Marijuana	1	1	0	0%	0	1	0%	4	0	4	0%
Crack/Cocaine	0	0	0	0%	0	0	0%	1	0	1	0%
Prescribed Meds	0	0	0	0%	0	0	0%	0	0	0	0%
Weapons	0	0	0	0%	0	0	0%	0	0	0	0%
Money	0	0	0	0%	0	0	0%	0	0	0	0%
Other	3	0	3	0%	0	3	0%	5	7	-2	-29%
Contraband by Shift	40	50	-10	-20%	15	25	167%	184	96	88	92%
6 - 2 Shift	12	25	-13	-52%	5	7	140%	74	32	42	131%
2-10 Shift	22	16	6	38%	9	13	144%	85	60	25	42%
10 - 6 Shift	6	9	-3	-33%	1	5	500%	25	4	21	525%
Contraband by Floor	34	49	-15	-31%	15	19	127%	170	96	74	77%
6th Floor	0	2	-2	-100%	1	-1	-100%	10	8	2	25%
5th Floor	2	2	0	0%	2	0	0%	12	6	6	100%
4th Floor	3	10	-7	-70%	1	2	200%	36	21	15	71%
3rd Floor	8	13	-5	-38%	0	8	0%	34	9	25	278%
2nd Floor	6	7	-1	-14%	2	4	200%	25	4	21	525%
1st Floor	4	8	-4	-50%	2	2	100%	26	18	8	44%
Deadlock/Admin Seg	1	2	-1	-50%	1	0	0%	5	8	-3	-38%
Lower Level	1	0	1	0%	0	1	0%	5	0	5	0%
Annex	6	3	3	100%	3	3	100%	9	15	-6	-40%
Intake	3	2	1	50%	3	0	0%	8	7	1	14%

Green: decrease Red: increase

Note: Contraband by Shift includes Jail East beginning January 2005.

Note: Contraband report were revised in January 2005 and the total now includes found sheets or pillow cases that were not being counted before.

Jail Security Operations Report

April-05

(Page 23)

Jail Sec Ops Stats	This Month to Last Month				Same Month Last Year			Year to Date (Last Year/This Year)			
	Apr-05	Mar-05	(+/-)	% Chng	Apr-04	(+/-)	% Chng	2005	2004	(+/-)	% Chng
Scheduled Shakedowns	3	98	-95	-97%	37	-34	-92%	202	191	11	6%
6 - 2 Shift	1	44	-43	-98%	4	-3	-75%	88	64	24	38%
2 - 10 Shift	1	33	-32	-97%	16	-15	-94%	62	70	-8	-11%
10 - 6 Shift	1	21	-20	-95%	17	-16	-94%	52	57	-5	-9%
Use of Force	24	35	-11	-31%	36	-12	-33%	129	121	8	7%
Use of Chemical	18	20	-2	-10%	21	-3	-14%	75	71	4	6%
Other Use of Force	6	15	-9	-60%	15	-9	-60%	54	50	4	8%
Fire Drills	6	6	0	0%	6	0	0%	24	23	1	4%
Fire Drill Deficiencies	0	0	0	0%	4	-4	-100%	3	25	-22	-88%

Jail Transportation Stats	This Month to Last Month				Same Month Last Year			Year to Date (Last Year/This Year)			
	Apr-05	Mar-05	(+/-)	% Chng	Apr-04	(+/-)	% Chng	2005	2004	(+/-)	% Chng
Total Transportation Trips	332	339	-7	-2%	516	-184	-36%	1,450	2,040	-590	-29%
Within County Trips	319	333	-14	-4%	491	-172	-35%	1,404	1,960	-556	-28%
Jail East	49	34	15	44%	171	-122	-71%	197	549	-352	-64%
MMHI	14	26	-12	-46%	35	-21	-60%	73	135	-62	-46%
SCCC	7	9	-2	-22%	19	-12	-63%	39	80	-41	-51%
Med Plex	39	83	-44	-53%	66	-27	-41%	285	284	1	0%
Emergency Room	151	133	18	14%	108	43	40%	543	496	47	9%
Prison Ward	20	21	-1	-5%	22	-2	-9%	95	121	-26	-21%
Shelby County Health Dept	4	1	3	300%	6	-2	-33%	17	32	-15	-47%
Funeral	0	0	0	0%	4	-4	-100%	3	19	-16	-84%
Others	35	26	9	35%	60	-25	-42%	152	244	-92	-38%
Out of County Trips	13	6	7	117%	25	-12	-48%	46	80	-34	-43%
State Pen, Hennings TN	0	0	0	0%	12	-12	-100%	8	43	-35	-81%
Western State Mental Health, Bolivar TN	2	3	-1	-33%	7	-5	-71%	14	18	-4	-22%
MTMHI, Nashville	1	3	-2	-67%	4	-3	-75%	9	4	5	125%
Others	10	0	10	0%	2	8	400%	15	15	0	0%
Total Car Mileage	5950	5438	512	9%	10198	-4248	-42%	22632	37516	-14884	-40%
Total Transportation Time (Hours)	160	131	29	22%	313	-153	-49%	631	1228	-597	-49%
Total Number of Staff for Trans.	36	39	-3	-8%	39	-3	-8%	153	153	0	0%
Total Inmates Transported	1042	514	528	103%	2050	-1008	-49%	3608	2050	1558	76%

Green: decrease Red: Increase

Note: Started collecting stats for Inmates Transported in April 2004.

Jail Human Resource Report

April-05

(Page 24)

Jail Human Resource	This Month to Last Month				Same Month Last Year			Year to Date (Last Year/This Year)			
	Apr-05	Mar-05	(+/-)	% Chng	Apr-04	(+/-)	% Chng	2005	2004	(+/-)	% Chng
Daily Avg Employees on Sick Leave	100	83	17	20%	78	22	28%	93	73	20	27%
Daily Avg Regular Sick Leave	34	28	6	21%	30	4	13%	32	28	4	15%
Security Staff	32	26	6	23%	27	5	19%	30	25	5	20%
Support Staff	2	2	0	0%	3	-1	-33%	2	3	-1	-25%
Daily Avg Extended Sick Leave	66	55	11	20%	48	18	38%	61	46	15	33%
Extended Sick Leave	20	17	3	18%	20	0	0%	21	17	4	26%
FMLA	40	32	8	25%	19	21	111%	34	21	14	66%
OJI	4	5	-1	-20%	4	0	0%	5	6	-1	-18%
Maternity	1	1	0	0%	3	-2	-67%	1	2	-1	-50%
Disability	1	0	1	0%	2	-1	-50%	1	1	-1	-40%
Total Over Time (Hours)	519	410	109	27%	873	-354	-41%	2140	1759	381	22%
Total Dismissed Cases	20	22	-2	-9%	0	20	0%	80	0	80	0%
Attendance Disciplinary	14	45	-31	-69%	15	-1	-7%	112	113	-1	-1%
Total Major and Minor Infractions	16	15	1	7%	13	3	23%	74	147	-73	-50%
6 - 2 Shift	9	11	-2	-18%	5	4	80%	42	59	-17	-29%
2 - 10 Shift	2	0	2	0%	2	0	0%	11	30	-19	-63%
10 - 6 Shift	0	4	-4	-100%	4	-4	-100%	15	45	-30	-67%
Jail East	5	0	5	0%	2	3	150%	6	13	-7	-54%
Informal Tardiness Violations	61	44	17	39%	19	42	221%	197	111	86	77%
6 - 2 Shift	33	21	12	57%	15	18	120%	91	49	42	86%
2 - 10 Shift	13	11	2	18%	3	10	333%	58	43	15	35%
10 - 6 Shift	9	10	-1	-10%	1	8	800%	34	18	16	89%
Jail East	6	2	4	200%	0	6	0%	14	1	13	1300%
Employee Disciplinary Infractions	32	44	-12	-27%	43	-11	-26%	155	198	-43	-22%
Disciplinary Violation Type	41	58	-17	-29%	46	-5	-11%	188	219	-31	-14%
*Force	0	2	-2	-100%	1	-1	-100%	2	6	-4	-67%
Attendance	25	22	3	14%	18	7	39%	93	90	3	3%
Conduct	11	28	-17	-61%	17	-6	-35%	69	76	-7	-9%
Performance	5	6	-1	-17%	10	-5	-50%	24	47	-23	-49%
Total Drug Tests	96	96	0	0%	91	5	5%	325	91	234	257%
Pass	96	95	1	1%	90	6	7%	324	90	234	260%
Fail/Resign	0	1	-1	-100%	1	-1	-100%	1	1	0	0%

Green: decrease Red: increase

*Force is a new Disciplinary Violation Type added in February 2004.

Note: Started collecting data for Total Dismissed Cases in July 2004.

Jail Medical Report - 201 Poplar April-05

(Page 25)

Jail Medical Stats - 201	This Month to Last Month				Same Month Last Year			Year to Date (Last Year/This Year)			
	Apr-05	Mar-05	(+/-)	% Chng	Apr-04	(+/-)	% Chng	2005	2004	(+/-)	% Chng
14 Day Assessments	453	462	-9	-2%	827	-374	-45%	2040	2952	-912	-31%
Treatments	440	356	84	24%	352	88	25%	1834	1389	445	32%
Total Sick-Call	1204	1187	17	1%	1923	-719	-37%	5025	7054	-2029	-29%
MD Sick-Call	344	403	-59	-15%	600	-256	-43%	1785	2422	-637	-26%
Nurse Practitioner Sick-Call	106	31	75	242%	606	-500	-83%	153	1997	-1844	-92%
Nurse Sick-Call	754	753	1	0%	717	37	5%	3087	2635	452	17%
Total Visits	1593	1583	10	1%	1644	-51	-3%	6432	6430	2	0%
Walk-In Visits	1171	1037	134	13%	860	311	36%	4236	3418	818	24%
Dental Visits	176	266	-90	-34%	242	-66	-27%	1036	755	281	37%
Psychiatric Visits	246	280	-34	-12%	542	-296	-55%	1160	2257	-1097	-49%
Diabetic Insuline Injections	3129	3159	-30	-1%	2398	731	30%	12562	9343	3219	34%
Number of PPDs Given	794	972	-178	-18%	813	-19	-2%	3242	3295	-53	-2%
Number of PPDs Read	945	674	271	40%	879	66	8%	2903	2891	12	0%
Number of Positive PPDs	30	20	10	50%	34	-4	-12%	119	118	1	1%
Inmates on TB Meds (daily avg)	44	53	-9	-17%	27	17	63%	47	28	19	65%
Inmates on HIV Meds (daily avg)	15	12	3	25%	11	4	36%	14	11	2	20%
Scheduled Clinic Appointments	207	254	-47	-19%	123	84	68%	917	638	279	44%
Treated at Clinic	117	130	-13	-10%	63	54	86%	521	321	200	62%
Not Treated at Clinic	90	124	-34	-27%	60	30	50%	396	317	79	25%
Total Referrals	84	70	14	20%	52	32	62%	315	259	56	22%
ER Referrals	84	70	14	20%	50	34	68%	315	243	72	30%
Offsite Mental Health Referrals	0	0	0	0%	2	-2	-100%	0	16	-16	-100%

Green: decrease Red: increase

Jail Medical Report - Jail East

April-05

(Page 26)

Jail Medical Stats - JE	This Month to Last Month				Same Month Last Year			Year to Date (Last Year/This Year)			
	Apr-05	Mar-05	(+/-)	% Chng	Apr-04	(+/-)	% Chng	2005	2004	(+/-)	% Chng
14 Day Assessments	159	101	58	57%	105	54	51%	445	306	139	45%
Treatments	21	66	-45	-68%	37	-16	-43%	141	90	51	57%
Total Sick-Call	381	625	-244	-39%	551	-170	-31%	1876	2058	-182	-9%
MD Sick-Call	91	196	-105	-54%	188	-97	-52%	587	608	-21	-3%
Nurse Sick-Call	290	429	-139	-32%	363	-73	-20%	1289	1450	-161	-11%
Total Visits	199	175	24	14%	275	-76	-28%	756	971	-215	-22%
Walk-In Visits	87	65	22	34%	111	-24	-22%	289	462	-173	-37%
Dental Visits	24	19	5	26%	24	0	0%	82	94	-12	-13%
Psychiatric Visits	88	91	-3	-3%	140	-52	-37%	385	415	-30	-7%
Diabetic Insuline Injections	402	260	142	55%	180	222	123%	1021	761	260	34%
Number of PPDs Given	150	137	13	9%	121	29	24%	503	369	134	36%
Number of PPDs Read	119	120	-1	-1%	85	34	40%	421	298	123	41%
Number of Positive PPDs	8	13	-5	-38%	4	4	100%	27	22	5	23%
Inmates on TB Meds	2	4	-2	-50%	4	-2	-50%	9	11	-2	-18%
Inmates on HIV Meds	0	2	-2	-100%	0	0	0%	6	0	6	0%
Scheduled Clinic Appointments	40	41	-1	-2%	60	-20	-33%	198	227	-29	-13%
Total Referrals	30	13	17	131%	11	19	173%	76	33	43	130%
ER Referrals	25	12	13	108%	8	17	213%	66	25	41	164%
Offsite Mental Health Referrals	5	1	4	400%	3	2	67%	10	8	2	25%

Green: decrease Red: increase

Jail Maintenance Report

April-05

(Page 27)

Jail Maintenance Stats	This Month to Last Month				Same Month Last Year			Year to Date (Last Year/This Year)			
	Apr-05	Mar-05	(+/-)	% Chng	Apr-04	(+/-)	% Chng	2005	2004	(+/-)	% Chng
Work Orders Submitted	1989	2036	-47	-2%	2711	-722	-27%	8259	11683	-3424	-29%
Completed Work Orders	1970	2005	-35	-2%	2637	-667	-25%	8180	11439	-3259	-28%
Pending	19	31	-12	-39%	74	-55	-74%	79	244	-165	-68%
Repeat Work Orders	165	160	5	3%	228	-63	-28%	653	1137	-484	-43%
No Problem Found	88	134	-46	-34%	5	83	1660%	431	592	-161	-27%
Respond by Following Day	0	0	0	0%	78	-78	-100%	16	435	-419	-96%
On Bout	9	0	9	0%	0	9	0%	9	0	9	0%

Green: decrease Red: increase

Note: No data available for Repeat Work Orders, No Problem Found and Over 24 hours to Complete in March 2004 due to change in management.

Note: Data collection method for maintenance was modified as of March 2004.

Note: No data available in March 2004 for Repeat Work Orders, No Problem Found and Respond by Following Day.

Note: Started collecting statistics for On Bout in April 2005.

Jail Environmental Report

April-05

(Page 28)

Jail Environmental Stats	This Month to Last Month				Same Month Last Year			Year to Date (Last Year/This Year)			
	Apr-05	Mar-05	(+/-)	% Chng	Apr-04	(+/-)	% Chng	2005	2004	(+/-)	% Chng
Kitchen Inspections	47	55	-8	-15%	52	-5	-10%	210	212	-2	-1%
6-2 Shift	23	27	-4	-15%	27	-4	-15%	101	104	-3	-3%
10-6 Shift	24	28	-4	-14%	28	-4	-14%	109	108	1	1%
Kitchen Inspection Deficiencies	85	107	-22	-21%	0	85	0%	429	0	429	0%
Kitchen Reinspection Deficiencies	46	69	-23	-33%	0	46	0%	252	0	252	0%
Floor Inspections - Deficiencies	305	232	73	31%	426	-121	-28%	1024	1236	-212	-17%
6th Floor	14	11	3	27%	14	0	0%	44	59	-15	-25%
5th Floor	13	10	3	30%	22	-9	-41%	43	82	-39	-48%
4th Floor	76	58	18	31%	74	2	3%	263	260	3	1%
3rd Floor	22	20	2	10%	76	-54	-71%	127	249	-122	-49%
2nd Floor	64	62	2	3%	84	-20	-24%	208	286	-78	-27%
1st Floor Admin. Seg.	20	19	1	5%	29	-9	-31%	75	92	-17	-18%
*Intake & Release	13	8	5	63%	18	-5	-28%	42	35	7	20%
*Lower Level	59	20	39	195%	52	7	13%	113	92	21	23%
*Annex	4	6	-2	-33%	20	-16	-80%	28	44	-16	-36%
*Jail East	20	18	2	11%	37	-17	-46%	81	37	44	119%
Repeat Deficiencies	227	137	90	66%	370	-143	-39%	677	1003	-326	-33%
6th Floor	6	9	-3	-33%	14	-8	-57%	28	47	-19	-40%
5th Floor	7	8	-1	-13%	21	-14	-67%	27	68	-41	-60%
4th Floor	66	42	24	57%	69	-3	-4%	198	197	1	1%
3rd Floor	9	10	-1	-10%	70	-61	-87%	62	200	-138	-69%
2nd Floor	50	21	29	138%	81	-31	-38%	131	253	-122	-48%
1st Floor Admin. Seg.	9	17	-8	-47%	28	-19	-68%	52	84	-32	-38%
*Intake & Release	12	4	8	200%	18	-6	-33%	31	35	-4	-11%
*Lower Level	57	16	41	256%	33	24	73%	97	63	34	54%
*Annex	2	4	-2	-50%	12	-10	-83%	17	32	-15	-47%
*Jail East	9	6	3	50%	24	-15	-63%	34	24	10	42%

Green: decrease Red: increase

Note: Started collecting statistics for Floor Inspections and Deficiencies in February 2004.

* Started collecting statistics for Intake & Release, Lower Level, Annex and Jail East in March 04.

Note: Due to work flow changes, Kitchen Inspections and Deficiencies data collection method was redefined in September 2004. No Data available before Sept 2004.

Jail Operations Report

April-05

(Page 29)

Jail Training Stats	This Month to Last Month				Same Month Last Year			Year to Date (Last Year/This Year)			
	Apr-05	Mar-05	(+/-)	% Chng	Apr-04	(+/-)	% Chng	2005	2004	(+/-)	% Chng
Total Number of Staffs Trained	688	495	193	39%	483	205	42%	1914	2156	-242	-11%
Orientation	11	23	-12	-52%	8	3	38%	38	21	17	81%
NCIC Certified	33	0	33	0%	42	-9	-21%	33	42	-9	-21%
In Service	108	136	-28	-21%	142	-34	-24%	465	473	-8	-2%
FTO	33	16	17	106%	0	33	0%	291	0	291	0%
Firearms	0	6	-6	-100%	0	0	0%	6	0	6	0%
Other In House Training	503	314	189	60%	291	212	73%	1076	1620	-544	-34%
Outside Specialty Training	0	0	0	0%	0	0	0%	5	0	5	0%

Jail Food Services Stats	This Month to Last Month				Same Month Last Year			Year to Date (Last Year/This Year)			
	Apr-05	Mar-05	(+/-)	% Chng	Apr-04	(+/-)	% Chng	2005	2004	(+/-)	% Chng
Total Meals Served	215,581	253,073	-37,492	-15%	204,196	11,385	6%	876,559	873,061	3,498	0%
Inmates Meals	205,833	241,790	-35,957	-15%	195,137	10,696	5%	836,250	831,819	4,431	1%
Employee Meals	9,748	11,283	-1,535	-14%	9,059	689	8%	40,309	41,242	-933	-2%

Jail Fiduciary Stats	This Month to Last Month				Same Month Last Year			Year to Date (Last Year/This Year)			
	Apr-05	Mar-05	(+/-)	% Chng	Apr-04	(+/-)	% Chng	2005	2004	(+/-)	% Chng
201 Poplar Dress Out	2446	2541	-95	-4%	2870	-424	-15%	10460	10991	-531	-5%
Jail East DressOut	551	545	6	1%	0	551	0%	2041	0	2041	0%
Property Damage Charged	\$15	\$40	-25	-63%	\$0	15	0%	\$66	\$5	61	1220%
Property Damage Collected	\$15	\$1	14	2043%	\$0	15	0%	\$27	\$5	22	434%
Medical Activity Charged	\$2,236	\$2,547	-311	-12%	\$2,017	219	11%	\$11,184	\$6,133	5051	82%
Medical Activity Collected	\$1,661	\$2,019	-358	-18%	\$1,424	236	17%	\$8,199	\$4,755	3444	72%

Green: decrease Red: increase

Note: Started collecting statistics for Jail East Dress Out in September 2004.

Note: No data for Other In House Training due to staff changes in December 2004.

Note: Total Meals Served are based on Aramark's accounting period. There will be a 5-week reporting period every quarter.

PERSONNEL - JAIL DIVISION

ANNUAL BUDGET	TO DATE (JULY-APRIL) ACTIVITY	REMAINING BALANCE	% USED	% BAL
62,601,006	50,803,191	11,797,815	81%	19%

PLAN VS ACTUAL (10 OF 12 PERIODS REPORTING)

PLAN 10/12	ACTUAL 10/12	VARIANCE TO DATE	(+) OR (-)
\$52,167,505	\$50,803,191	\$1,364,314	3%

O & M - JAIL DIVISION

TOTAL BUDGET	TO DATE (JULY-APRIL) ACTIVITY	REMAINING BALANCE	% USED	% BAL
\$9,128,000	\$6,457,212	\$2,670,788	71%	29%

PLAN VS ACTUAL (10 OF 12 PERIODS REPORTING)

PROPOSED 10/12	ACTUAL 10/12	VARIANCE TO DATE	(+) OR (-)
7,606,667	6,457,212	1,149,455	15%

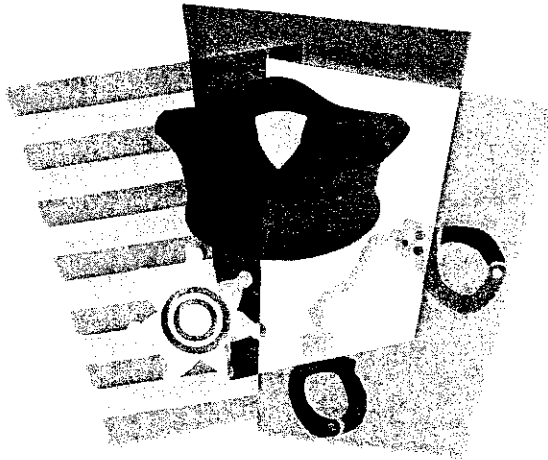
TOTAL - JAIL DIVISION

TOTAL BUDGET	TO DATE (JULY-APRIL.) ACTIVITY	REMAINING BALANCE	% USED	% BAL
\$71,729,006	\$57,260,403	\$14,468,603	80%	20%

PLAN VS ACTUAL (10 OF 12 PERIODS REPORTING)

PLAN 10/12	ACTUAL 10/12	VARIANCE TO DATE	(+) OR (-)
59,774,172	57,260,403	2,513,769	4%

The End



Disclaimer:

This report does not represent or guarantee that the information is accurate, complete or current. Neither the Jail Report Card nor its creator shall be liable for any damages arising out of or in connection with the use of this report.