

EXHIBIT 8



4



This story is part of the series

East Ramapo metal detectors perpetuate stereotypes: Letter

The Journal News

Published 11:49 a.m. ET March 21, 2017 | Updated 5:32 p.m. ET March 22, 2017

No other school district in Rockland utilizes metal detectors. The policy marginalizes students of color.



Buy Photo

(Photo: File photo by The Journal News)



CONNECT



TWEET



LINKEDIN



COMMENT



EMAIL



MORE

Re "[East Ramapo: Clergy concerned about metal detector use](#)," March 17 article:

The East Ramapo School Board recently passed a policy authorizing the use of metal detecting devices at school events and on school grounds. According to officials, the policy is not a response to a specific incident — there have been none — but rather a precautionary measure.

The state-appointed monitor, Chuck Szuberla, [indicated the policy is intended to send a message](#) to kids that “hey, if we need it, we’ve got it.” The Journal News reports there are no other schools in Rockland County that have authorized the use of metal detector devices.

FROM THE USA TODAY NETWORK



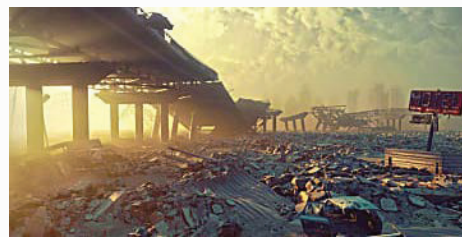
Bill Belichick apologizes to Sean McDermott for Gronk's dirty hit: 'It was (...)

For The Win



Florida State QB's message to former coach Jimbo Fisher: 'You could of said

For The Win



3 emergency kits Costco sells like it's no big deal

Allthemoms.com

These sites are part of the USA TODAY NETWORK. Their content is produced independently from our newsrooms.

East Ramapo Schools monitor Charles Szuberla talks about metal detectors policy during a visit to Elmwood Elementary School in Monsey, Thursday, Feb. 16, 2017. Peter Carr/The Journal News

We hold precious the safety and welfare of students, faculty, staff and guests, and can appreciate the use of metal detectors in schools if, and when, appropriate. But we are cognizant of the disproportionate stereotyping of persons of color as being disposed to violent and antisocial behavior.

Making East Ramapo the only Rockland district out of eight with a metal detector policy, without demonstrating any need for such a policy, perpetuates stereotypes and further marginalizes our students.

- EAST RAMAPO: Metal detector use approved in schools
- EDITORIAL SPOTLIGHT: East Ramapo monitors could be model
- VOTING: East Ramapo holds off on poll changes

Hence, Rockland Clergy for Social Justice cannot support this policy. We call for the policy to be rescinded; and for the district to establish a transparent process to determine the safety needs of all East Ramapo students. We recommend the process include students, board members, parents, faculty and representatives from community organizations including the NAACP.

Rev. Weldon McWilliams IV, Ph.D.,*First Baptist Church of Spring Valley*

Rabbi Paula Mack Drill,*Orangetown Jewish Center*

Trustee Azeem Farooki,*Islamic Center of Rockland*

The writers are members of Rockland Clergy for Social Justice.

CONNECT

TWEET

LINKEDIN

4 COMMENT

EMAIL

MORE

AD CONTENT

Sponsored Links by Taboola



Celebs Who Looked Different Before They Became Super Famous

Livingly



What Bernadette From 'The Big Bang Theory' Looks Like In Real Life ...

EternalLifeStyle



18 Pets Who Realized They're Going To The Vet

Give It Love



Do You Come From Royal Blood? Your Last Name May Tell You.

Ancestry



Body Gestures You Should Avoid in the Workplace (22 Examples)

Work + Money



We Can Guess Your Education Level With This Quiz

Definition