

UNITED STATES DISTRICT COURT  
NORTHERN DISTRICT OF NEW YORK

---

ANNE POPE, JANIS GONZALEZ, and WANDA  
WILLINGHAM,  
Plaintiffs,

vs.

COUNTY OF ALBANY and the ALBANY  
COUNTY BOARD OF ELECTIONS,

Defendants.

---

**AFFIDAVIT OF  
JOHN E. MERRILL IN  
OPPOSITION TO  
PLAINTIFFS' MOTION  
FOR PRELIMINARY  
INJUNCTION**

Civil Action #11-CV-736

LEK/DRH

STATE OF NEW YORK     )  
  )ss.  
COUNTY OF ALBANY     )

John E. Merrill, being duly sworn, deposes, and says:

1. I am the Redistricting and Mapping Coordinator for the Albany County Legislature. I submit this affidavit in opposition to plaintiffs' motion for a preliminary injunction.

2. In a Resolution dated March 14, 2011, I was retained by the Albany County Legislature to assist the Redistricting Commission in preparing a map that would establish new districts in light of the 2010 Census.

3. On March 25, 2011, I obtained the 2010 Census redistricting data [P.L. 94-171] for New York State and began extracting the pertinent Albany County information for use in ESRI mapping program with DISTRICTSolv as an add-on.

4. Attached as Exhibit A is 2010 Census information for the County of Albany and City of Albany. The 2010 census for Albany County reported:

|   | <b>Population</b> | <b>Percentage</b> |
|---|-------------------|-------------------|
| <b>Total Population</b>                                   | <b>304, 204</b>   | <b>100.00%</b>    |
| <b><i>Population by Race and Ethnicity</i></b>            |                   |                   |
| Non Hispanic or Latino -White                             | 231,152           | 75.99%            |
| Non Hispanic or Latino - Black or African American        | 36,396            | 11.96%            |
| Non Hispanic or Latino - American Indian & Alaskan Native | 453               | 0.15%             |
| Non Hispanic or Latino - Asian                            | 14,500            | 4.77%             |
| Non Hispanic or Latino - Hawaiian and Pacific Islander    | 88                | 0.03%             |
| Non Hispanic or Latino - Some other Race                  | 569               | 0.19%             |
| Non Hispanic or Latino - Two or More Races                | 6,129             | 2.01%             |
| Hispanic or Latino  | 14,917            | 4.90%             |
| <b>TOTALS</b>   | <b>304,204</b>    | <b>100.00%</b>    |
| <b><i>Population by Ethnicity Alone</i></b>               |                   |                   |
| Hispanic of Latino  | 14,917            | 4.90%             |
| Non Hispanic or Latino                                    | 289,287           | 95.10%            |
| <b>TOTALS</b>   | <b>304,204</b>    | <b>100.00%</b>    |
| <b>Total Population 18 years or older</b>                 | <b>243,573</b>    | <b>80.07%</b>     |
| Non Hispanic or Latino –White                             | 192,573           | 63.23%            |
| Non Hispanic or Latino - Black or African American        | 26,196            | 8.61%             |
| Non Hispanic or Latino - American Indian & Alaskan Native | 375               | 0.12%             |
| Non Hispanic or Latino - Asian                            | 10,980            | 3.61%             |
| Non Hispanic or Latino - Hawaiian and Pacific Islander    | 71                | 0.02%             |
| Non Hispanic or Latino - Some other Race                  | 341               | 0.11%             |
| Non Hispanic or Latino - Two or More Races                | 3,239             | 1.06%             |
| Hispanic or Latino  | 10,024            | 3.30%             |
| <b>TOTALS</b>   | <b>243,573</b>    | <b>80.07%</b>     |

See Exh. A.

5. In preparing the redistricting plan, I also followed the principles outlined in the National Conference of State Legislatures' Redistricting Law 2010, including:

- a. Compactness
- b. Contiguity
- c. Preservation of counties and other political subdivisions
- d. Preservation of communities of interest
- e. Preservation of cores of prior districts
- f. Protection of incumbents and
- g. Compliance with Section 2 of the Voting Rights Act.

Attached as Exhibit B are the Redistricting Guidelines.

6. The Redistricting Commission maintained a website at <http://www.albanycounty.com/legislature/redistricting.asp>, at which it posted the City of Albany's Neighborhood Association Map, current districting map, 2010 Census figures, current county legislative district population comparison, proposed redistricting maps, and block equivalency tables, and metes and bounds description for the final redistricting maps. Attached as Exhibit C is the City of Albany's Neighborhood Association Map and Current County Population Comparison.

7. Attached as Exhibit D is my redistricting progress report that summarizes the actions that I took in preparing the redistricting plan.

8. Attached as Exhibit E is the final plan which I prepared in accordance with the materials identified herein. On May 19, 2011, the Redistricting Commission adopted the final plan and forwarded to the Albany County Legislature for its consideration.

9. On May 23, 2011, the Albany County Legislature adopted Local Law C which enacted the final redistricting plan.

10. I have reviewed the redistricting plan offered by the Arbor Hill Environmental Justice and found that, in contrast to Local Law C, the effort to create a fifth minority-majority legislative district violates well-established redistricting principles, including compactness. As established by attached Exhibit F, plaintiffs' plan would also break up neighborhood associations, and also combine distant and distinct communities, and not preserve communities of interest.

/s/ John E. Merrill

---

John E. Merrill

Sworn to before me this  
29<sup>TH</sup> day of July, 2011

\_\_\_\_\_/s/ Peter G. Barber\_\_\_\_\_  
Notary Public, State of New York

**Albany County 2010 Census Results**

| Map Abbreviation                        | Category  | Population | County Percentage |
|---|---|------------|-------------------|
| TOT_POP                                 | Total Population  | 304,204    | 100.00%           |
| <i>Population by Race and Ethnicity</i> |   |            |                   |
| NH_WHITE                                | Not Hispanic or Latino - White  | 231,152    | 75.99%            |
| NH_BLACK                                | Not Hispanic or Latino - Black or African American                          | 36,396     | 11.96%            |
| NH_NAM                                  | Not Hispanic or Latino - American Indian & Alaskan Native                   | 453        | 0.15%             |
| NH_ASIAN                                | Not Hispanic or Latino - Asian  | 14,500     | 4.77%             |
| NH_HPI                                  | Not Hispanic or Latino - Hawaiian and Pacific Islander                      | 88         | 0.03%             |
| NH_SOR                                  | Not Hispanic or Latino - Some other Race                                    | 569        | 0.19%             |
| NH_2MR                                  | Not Hispanic or Latino - Two or More Races                                  | 6,129      | 2.01%             |
| POP_HL                                  | Hispanic or Latino  | 14,917     | 4.90%             |
| TOTALS                                  |   | 304,204    | 100.00%           |
| <i>Population by Ethnicity Alone</i>    |   |            |                   |
| POP_HL                                  | Hispanic or Latino  | 14,917     | 4.90%             |
| POP_NHL                                 | Not Hispanic or Latino  | 289,287    | 95.10%            |
| TOTALS                                  |   | 304,204    | 100.00%           |
| TOT_18                                  | Total Population 18 Years or Older  | 243,573    | 80.07%            |
| NH18_WH                                 | Not Hispanic or Latino - White 18 Years or Older                            | 192,347    | 63.23%            |
| NH18_BLK                                | Not Hispanic or Latino - Black or African American 18 Years or Older        | 26,196     | 8.61%             |
| NH18_NAM                                | Not Hispanic or Latino - American Indian & Alaskan Native 18 Years or Older | 375        | 0.12%             |
| NH18_ASN                                | Not Hispanic or Latino - Asian 18 Years or Older                            | 10,980     | 3.61%             |
| NH18_HPI                                | Not Hispanic or Latino - Hawaiian and Pacific Islander 18 Years or Older    | 71         | 0.02%             |
| NH18_SOR                                | Not Hispanic or Latino - Some other Race 18 Years or Older                  | 341        | 0.11%             |
| NH18_2MR                                | Not Hispanic or Latino - Two or More Races 18 Years or Older                | 3,239      | 1.06%             |
| HL_18                                   | Hispanic or Latino - 18 Years or Older                                      | 10,024     | 3.30%             |
| TOTALS                                  |   | 243,573    | 80.07%            |

**City of Albany 2010 Census Results**

| Map Abbreviation | Category  | Population | City Percentage |
|------------------|---|------------|-----------------|
| TOT_18           | Total Population 18 Years or Older  | 80,300     | 100.00%         |
| NH18_WH          | Not Hispanic or Latino - White 18 Years or Older                            | 48,231     | 60.06%          |
| NH18_BLK         | Not Hispanic or Latino - Black or African American 18 Years or Older        | 20,215     | 25.17%          |
| NH18_NAM         | Not Hispanic or Latino - American Indian & Alaskan Native 18 Years or Older | 164        | 0.20%           |
| NH18_ASN         | Not Hispanic or Latino - Asian 18 Years or Older                            | 4,000      | 4.98%           |
| NH18_HPI         | Not Hispanic or Latino - Hawaiian and Pacific Islander 18 Years or Older    | 41         | 0.05%           |
| NH18_SOR         | Not Hispanic or Latino - Some other Race 18 Years or Older                  | 207        | 0.26%           |
| NH18_2MR         | Not Hispanic or Latino - Two or More Races 18 Years or Older                | 1,644      | 2.05%           |
| HL_18            | Hispanic or Latino - 18 Years or Older                                      | 5,798      | 7.22%           |
| TOTALS           |   | 80,300     | 100.00%         |

## 2011 Redistricting of Albany County, New York

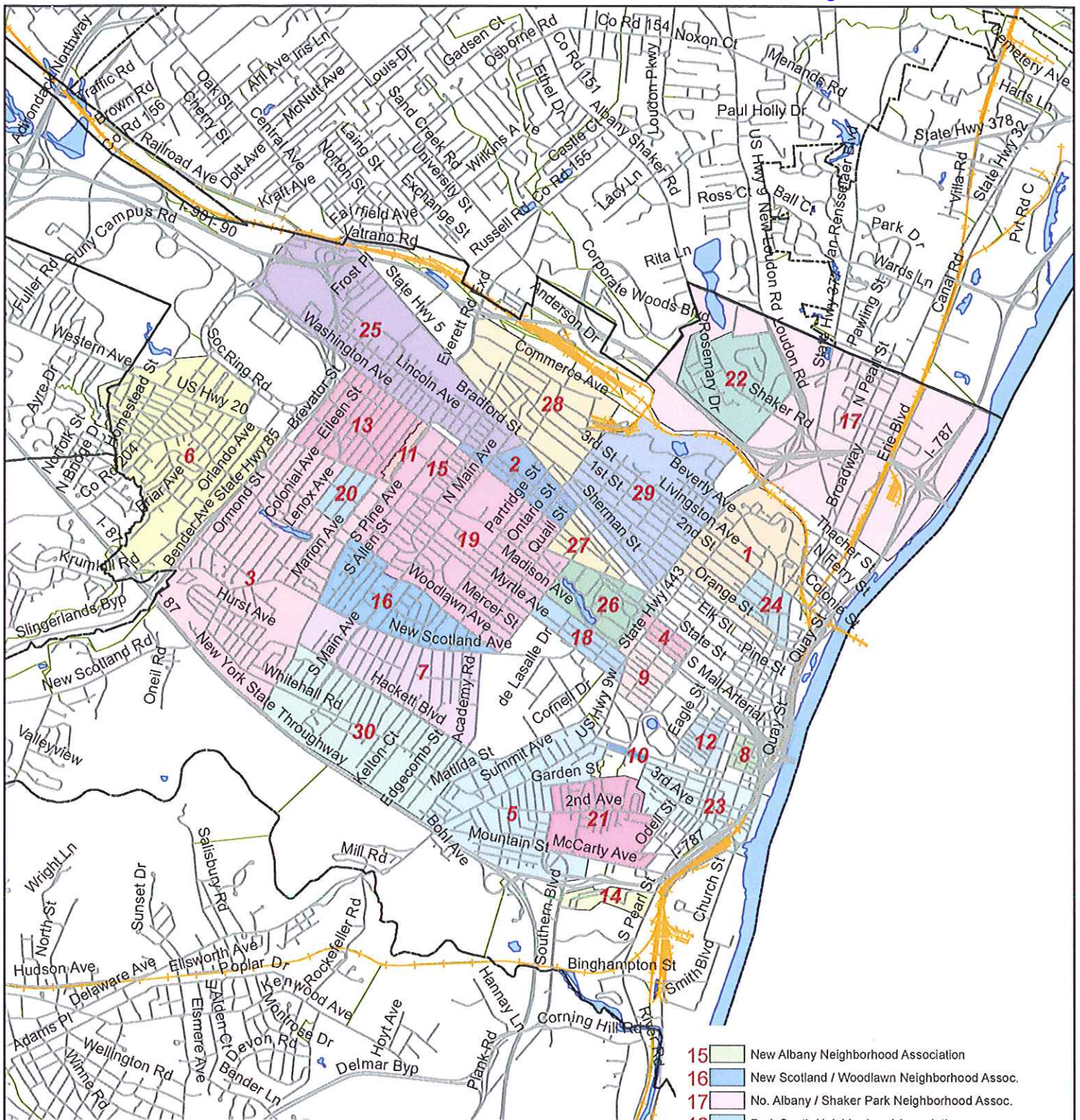
---

The Legislature of the County of Albany, NY is required by law to prepare alternatives for redistricting the thirty nine County Election Districts, at least once in every ten (10) years following the release of the Federal Census Statistics.

The Legislature shall form districts that are, as nearly as practicable, one thirty-ninth of the total population of the County, or whatever proportion they determine best, should a reduction in the legislative representation be desired. Furthermore, the redistricting plan shall provide fair and effective representation for all citizens of the County, including racial, ethnic, and language minorities, and be in conformance with the requirements of the United States Constitution and Federal statutes. To the extent it is practical to do so, districts shall: preserve identifiable communities of interest; be geographically compact (populous contiguous territory shall not be bypassed to reach distant populous areas); be composed of whole census units as developed by the United States Bureau of the Census; be composed of contiguous territory with reasonable access between population centers in the district, and not be drawn for the sole purpose of advantaging or protecting incumbents.

The National Conference of State Legislatures, in their review of Redistricting Law 2010 states that, since 1993, seven policies or goals have been judicially recognized as "traditional districting principles:"

1. Compactness
2. Contiguity
3. Preservation of counties and other political subdivisions
4. Preservation of communities of interest
5. Preservation of cores of prior districts
6. Protection of incumbents and
7. Compliance with Section 2 of the Voting Rights Act. (*Section 2 of the Voting Rights Act prohibits any state or political subdivision from imposing any voting qualification, standard, practice or procedure that results in the denial or abridgment of any U.S. citizen's right to vote on account of race, color or status as a member of a language minority group.*)

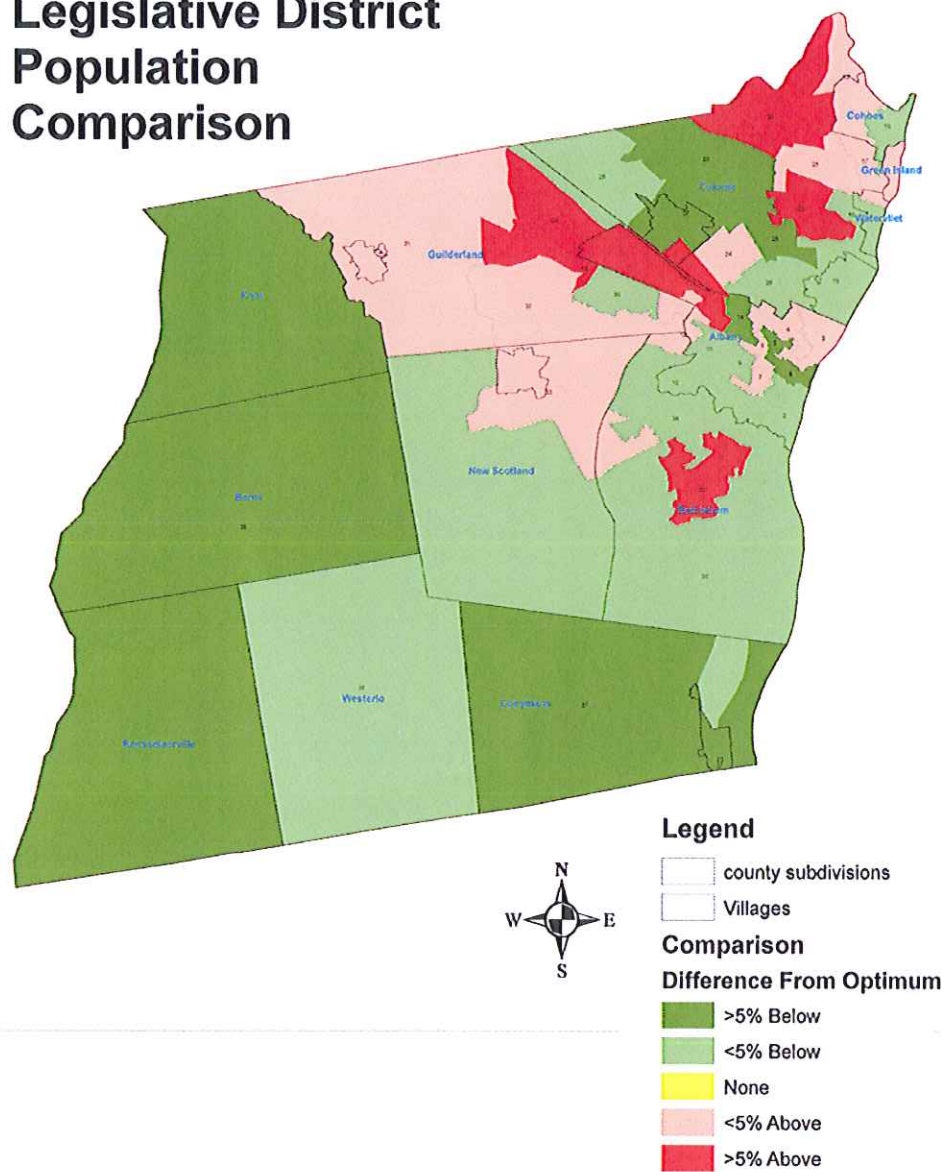


# City of Albany, New York

## Neighborhood Association Map

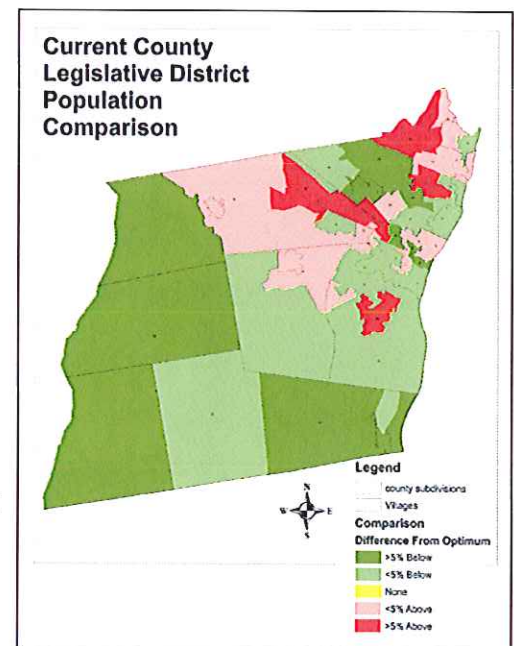
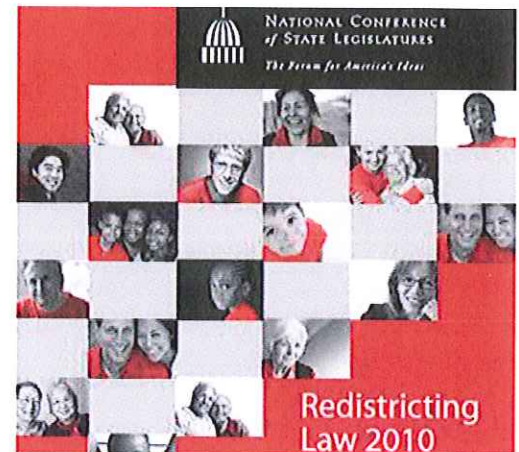
- |   |  |   |
|---|--|---|
| 1 Arbor Hill Concerned Citizens                   | 8 Historic Pastures Homeowners Association | 24 Ten Broeck Triangle (Historic District)    |
| 2 Beverwyck Neighborhood Association              | 9 Hudson Park Neighborhood Association     | 25 Upper Washington Ave. Neighborhood Assoc.  |
| 3 Buckingham Pond / Crestwood Neighborhood Assoc. | 10 Lincoln Park Neighborhood Association   | 26 Washington Park Neighborhood Association   |
| 4 Center Square Neighborhood Association          | 11 Manning Boulevard Neighborhood Assoc.   | 27 Washington Square Neighborhood Association |
| 5 Delaware Area Neighborhood Association          | 12 Mansion Neighborhood Association        | 28 West End Neighborhood Association          |
| 6 Eagle Hill Neighborhood Association             | 13 Melrose Neighborhood Association        | 29 West Hill Neighborhood Association         |
| 7 Helderberg Neighborhood Association             | 14 Mt. Hope Townhouse Association          | 30 Whitehall Neighborhood Association         |

# Current County Legislative District Population Comparison

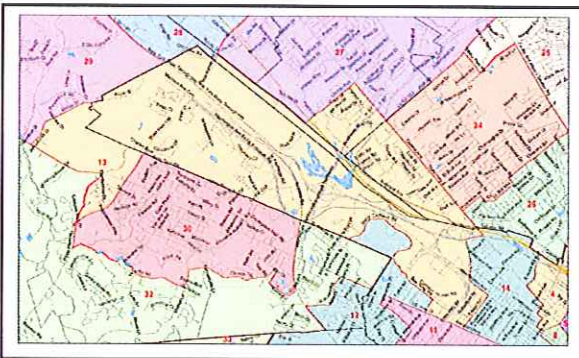


**Notes:**

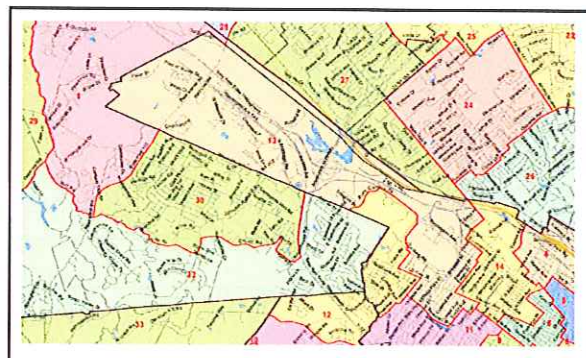
1. Jan. 31, 2011: Met with Dan McCoy and his assistant, Tom Scarff, about coming back to the county to work with the Legislature on redistricting. I agreed to do so, and told them my most important needs would be a districting add-on (DISTRICTSolv) to the ESRI mapping program already in use by the Planning Department along with an office space removed from the Legislature but close to the mapping resources and reproduction facilities the job demanded. They agreed that that was possible, and I could set up shop in my old office down the hall from their office in the Planning Department.
2. Received a copy (which I had requested) of Redistricting Law 2010 published by the National Conference of State Legislatures provided by the County Legislature's office. Read it, and made copious notes.
3. Started gathering all relevant GIS data to use as a basis for mapping the new districts based upon the 2010 Census results.
4. Received a copy of the districting extension for ERSI ArcView (DISTRICTSolv) around the 21st or 22nd of February and familiarized myself with it's capabilities.
5. Feb. 24, 2011: Met with the newly appointed Redistricting Commission (minus Norma Chapman and Thomas Cotrofeld) and they agreed to hire me pending a presentation to a joint caucus of the Legislature and the public. Their expressed hope was to present an acceptable plan to be approved in time to meet the petition deadline of June 6th.
6. March 3, 2011: Gave my presentation to the joint caucus of the Legislature and the public. End result...I was chosen to prepare the redistricting proposals for the Legislature, and was approved by the Legislature on March 14, 2011.
7. I began working on March 21st.
8. 2010 Census Redistricting Data [P.L. 94-171] Summary Files were released to NYS on March 24th. On the 25th I started working with Buddy McGuire from Information Services to extract the information we would need for the redistricting process.
9. By the end of the next week, April 1st, I was able to input the Census data into my mapping program and produce a map of the population load for the current legislative districts in order to determine where changes would be necessary in order to ensure equal representation.



10. Having heard from the Redistricting Commission that public sentiment they were hearing was stressing the need to have Legislative Election Districts (LEDs) conform as much as possible to existing municipal bounds, I ran my districting program for the first time to produce compact districts of  $\pm 5\%$  population deviation from the optimum load of 7,800, but I was unable to show Chairman Morse the results before he left for vacation on the 14th of April. The results were nothing anyone would desire. Municipal boundaries were crossed as much as before, and the fact that Mr. Infante would not be running again was brought to my attention. This exercise did, however, provide me with a reference point for what might be possible.
11. I further refined my first draft to maintain the core ideas of compactness and population limits. I tried to create fewer splits of municipal boundaries as has been the expressed desire of some of the people attending the public hearings, and reduced the number of LEDs in the City of Albany by one.
12. At the suggestion of Chairman Morse, I asked Tom Marcelle, the Minority Counsel, to meet with me and explain the problems encountered in the last redistricting, so that we might not repeat the same mistakes which lead to the many challenges of those efforts. Our meeting was very productive and he agreed to provide me with a copy of the court's decision in the last redistricting law suit. A reading of Judge Homer's decision on the challenge to the County's plan in the last redistricting effort provided me with very helpful insights on the court's definition of what constitutes a minority. (Not Hispanic or Latino Black and African Americans, Not Hispanic or Latino people of Two or More Races, and those who identified solely as Hispanic or Latino.)
13. I shifted the population load of district 13 (Infante's district) in a counter-clockwise direction, through the City of Albany and into the towns of Colonie and Guilderland where there has been an increase of population over the last decade, thereby making one less district which reached outside the City of Albany to justify its population load.
14. In the process, I pulled district 13 out of Guilderland and into the City of Albany, and was also able to eliminate its intrusion into the Town of Colonie. District 6 was pulled back into the City of Albany from its boundary with the Hudson River to more adequately address its representation of the Washington Park and Center Square neighborhood areas. The 12th district was pulled out of Guilderland, but still extends into the Town of Bethlehem.

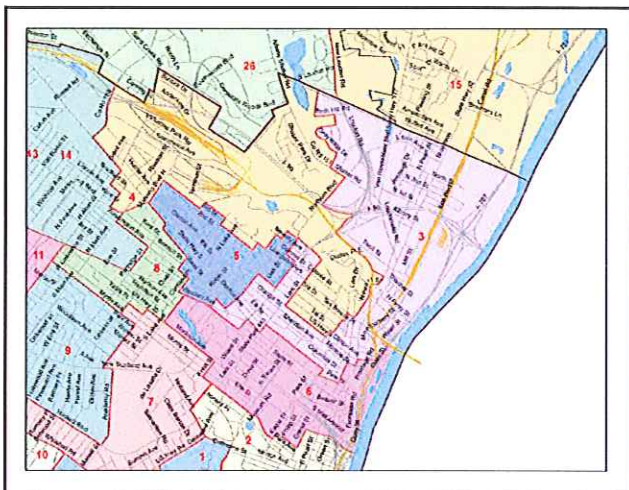


Current District 13

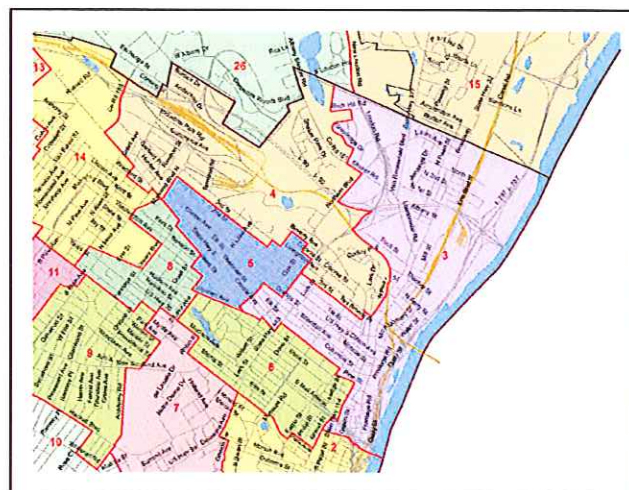


Proposed District 13

15. I re-arranged the minority/majority districts in the City of Albany to maintain the balance required by the court and to make them more compact and contiguous. This entailed extending district 2 to the southern border of the City of Albany down to the Normanskill and refining the division between districts 4 and 3 to avoid the appearance of gerrymandering which exists in the current districts. The resulting districts (numbers 2, 3, 4, and 5) are more compact and better conform to concentrations of the county's minority population. Attempts were made to create a fifth minority/majority district but the dispersion of minority representation throughout the rest of the county prohibited this.

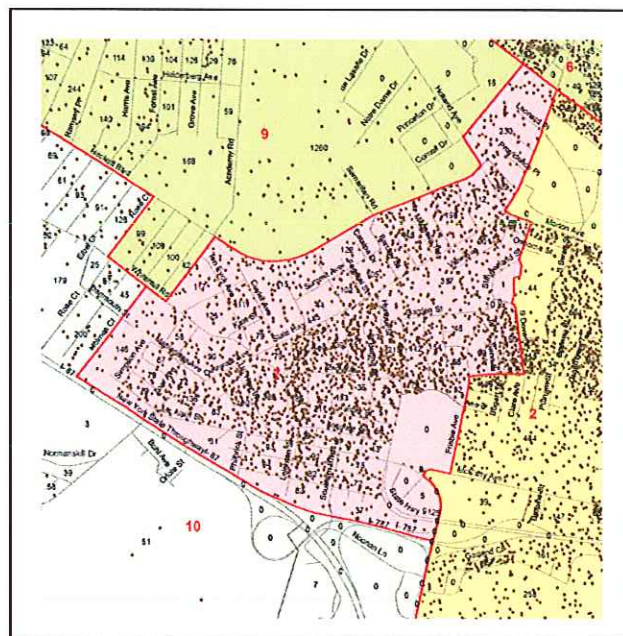


*Current Districts 3, 4, and 6*



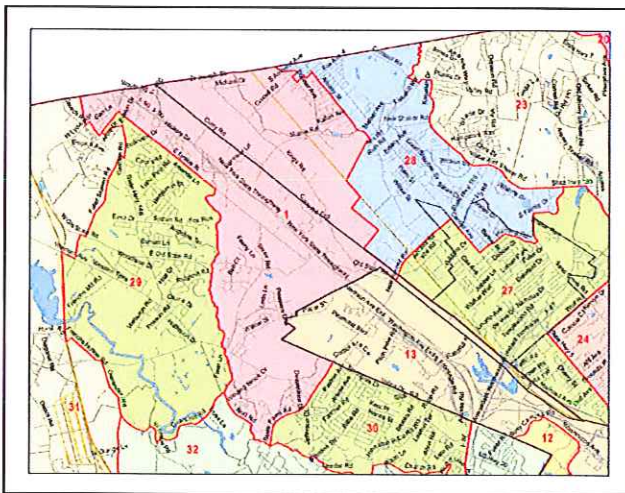
*Proposed Districts 3, 4, and 6*

The most likely place to make a new minority/majority district seemed to be around the district 7 area along 2nd Avenue. Although the density display of Not Hispanic Black and African American population suggested a possibility, the results were against it. This example (at right) showed only a 47.59% minority representation and could not be increased without extreme gerrymandering. I can't guarantee that someone won't come up with a different solution, but I haven't seen it yet and am open to suggestions.

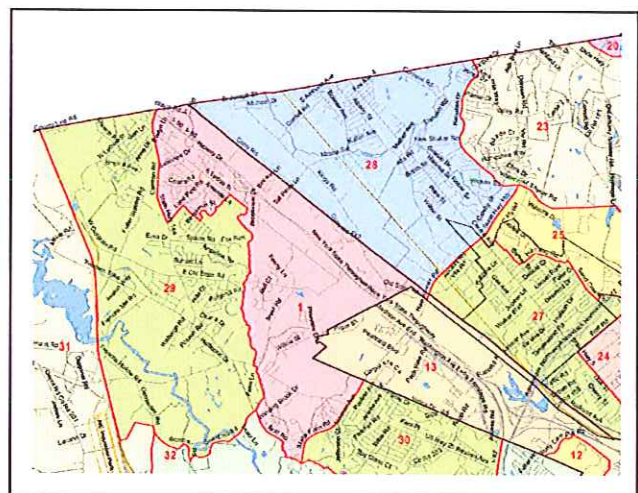


*Attempt to construct a 5th minority/majority district. Density of Not Hispanic Black and African American population shown.*

16. I expanded districts 37 and 39 which were under-represented in the 2010 Census.
17. This process (steps 13 through 16) created an unrepresented district which ran to the Schenectady County line covering the Community of Interest (COI) of the Pine Bush Conservation Area and a good deal of the new-growth area of the County. Unfortunately, this unrepresented district (shown on maps as district 1) crossed the town line between Colonie and Guilderland, a situation which the Commission asked me to look into changing if at all possible. However, this also brought about the surprise result of district 36 being spot-on at a total population of 7,800.
18. At his invite, I joined Tom Scarff, Thomas Cotrofeld and Christine Benedict at the Gateway Diner for a discussion of my efforts on Saturday morning (the 16th of April.) Lucille McKnight (newly appointed Commissioner) joined us, and Tom Scarff asked me to detail my efforts as of then. I presented them with the details explained above, and left them with printouts of the population results of the first draft proposal which I had arrived at. No maps were presented.
19. In order to rectify the situation of the new district 1 crossing the border between Colonie and Guilderland, I adjusted the population concentrations of districts in the Town of Colonie to move representation of the new-growth Pine Bush populations entirely into the Town of Guilderland. Unfortunately, this resulted in the expansion of district 31 into the Town of Knox and created a situation in which two incumbent legislators were in the same district (Mr. Gordon and Mr. Aylward.) This did, however, create new boundaries for the 39th which would solely encompass the three hill towns of Berne, Rensselaerville, and Westerlo. The 38th district would consist of most of rural New Scotland and a portion of a similarly populated and rural area of Bethlehem.

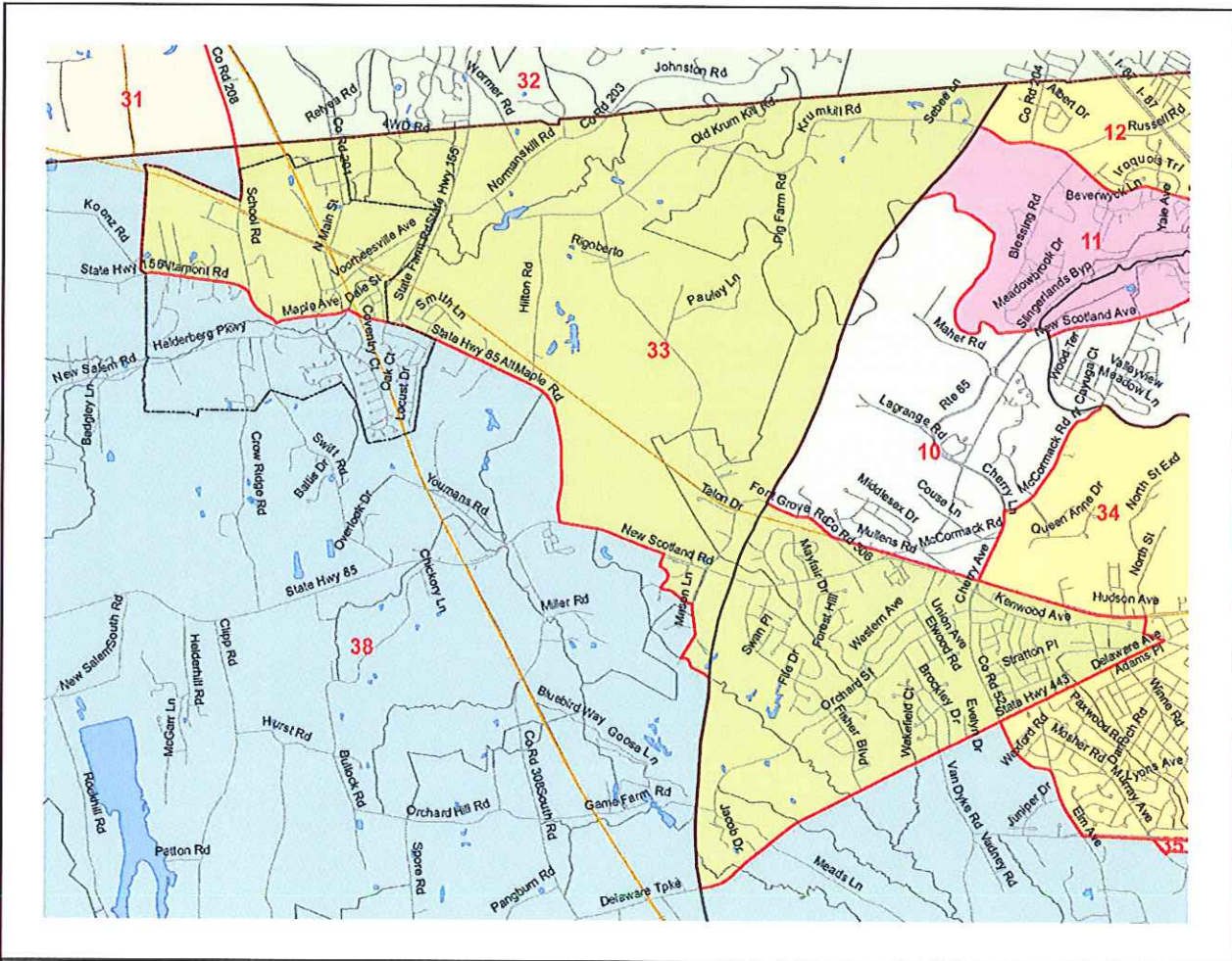


*First draft of the new District 1*



*Proposed new configuration of Districts 1 and 28*

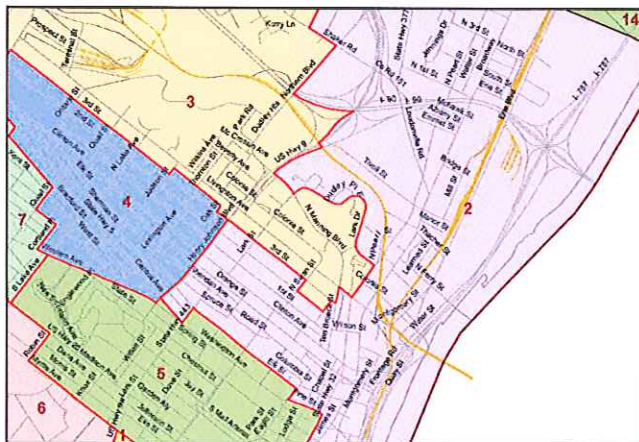
20. The 33rd district, although rather oddly shaped, still represents a district with many common interests, from pressure by developers attempting to expand suburban development into the rural/agricultural oriented areas of the county, to the intrusion/introduction of "big-box" stores into the area.



21. In addition to running these scenarios, I have collected local election district information for each municipality in order to help the County Board of Elections with their task of rearranging those voting districts after the county LEDs are delineated. These election districts often were constructed by splitting property lines, and following boundaries not consistent with Census block construction...a practice easily apparent in the Cities of Cohoes and Albany. With the help of local municipal clerks and ward leaders, I am fairly confident of their accuracy.
22. By May 4th, I was given the Commission's go-ahead to produced the materials needed to present their plan to the press at their Friday meeting.
23. On May 5th, as I was getting materials ready for the next day's Redistricting Commission meeting, I was asked to join Tom Scarff in his office where Wanda Willingham was raising a big stink about not being in her own district. It turned out that the major concern for both of them was the fact that Mr. Morse had asked me to re-number the districts to make their order

flow logically around the county, but neither one of them had been informed of this fact.

Ms Willingham also complained bitterly about the shape of her district and the unfairness of its coverage crossing too many neighborhoods and ward lines. She was vehement about the fact that her proposed district was on the west side of Henry John Boulevard and clearly in the West Hill Neighborhood Association district. She said she would not accept that. Tom called Shawn who relayed to me that if the minority representation and the district population could be maintained, I should try to make Wanda happy.



*What Wanda wanted...*

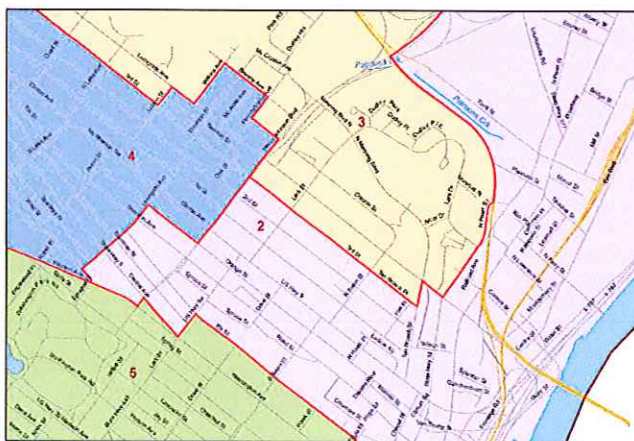
I did so, and worked out the new Block Equivalency Report and new maps dated May 5th to show the change. I e-mailed the new materials to the commission members, the minority counsel, and Tom Scarff that evening around 7 PM.

24. Friday the 6th of May I was asked by Chairman Morse to accompany him to the Commission meeting on the 12th floor. Upon arrival, I discovered that Mr. Scarff was handing out maps dated May 4th which did not show the changes of the day before. I helped replace the necessary district maps and the meeting commenced.

After the meeting adjourned, Ms Willingham followed me to my office wanting to confirm the fact that the line she insisted on having redrawn was the actual Neighborhood Association line.

25. I spent the greater part of Saturday the 7th and Sunday the 8th writing the Metes & Bounds descriptions at my home office and sent them out to the Majority and Minority counsel around 8:30 PM on Sunday.

26. Monday morning I was informed that the altered line was done less as a matter of maintaining the cohesiveness of a Community of Interest, but more as a matter of self-interest, and the Commission wanted the district lines restored to what they had agreed upon back on May 4th. I changed to maps back to that date, re-ran the Equivalency Report, edited the Metes and Bounds Report, printed out the new district maps and 4 whole maps for the county for use in that evenings meeting of the Legislature...all materials dated May 9, 2011. All materials were shipped down to General Services for duplication and binding.

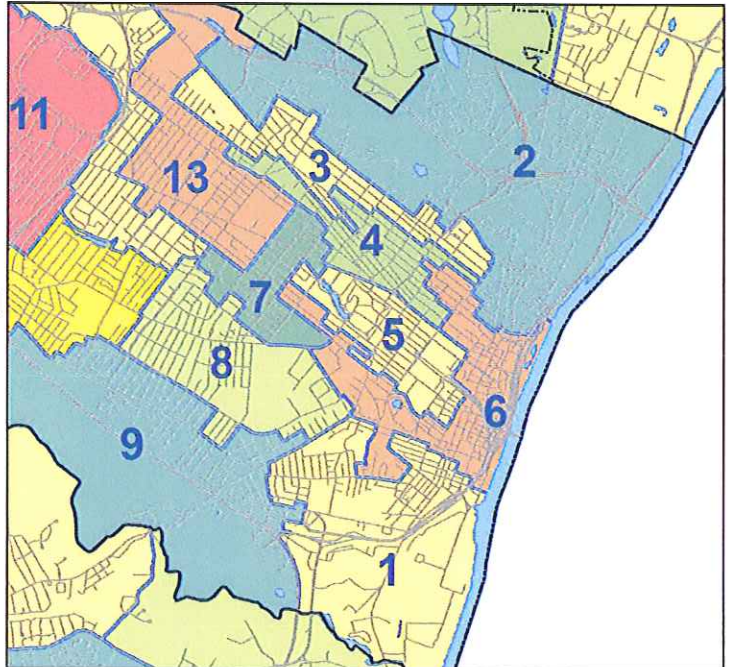


*What Wanda got...*

27. May 9th public hearing was well attended with (according to my notes) 16 people commenting. Noelle Kinsch (sp?) protested that she had been boxed out of running in the new 6th district; Herb Reilly made a case for not splitting Voorheesville; Aaron Mair said we could have made 6 minority-majority districts and called the plan malfeasance and wants a lower minority proportion than he had said was necessary in 2004; Hill-Towners eloquently explained their special circumstances and asked not to be split up.

Aaron's plan, which I recreated from images on his web site, shows 5 minority-majority districts which appear to be anything but compact and contiguous. The 6th LED includes parts of 10 separate neighborhood association districts. His statistics for minority representation in each district are less than what he insisted on in his challenge in 2004.

On May 24th, Aaron sent me the block equivalency file for his entire county plan which, incidentally, entirely removed the Town of Knox from its hill-town association with Berne, Rensselaerville, and Westerlo.

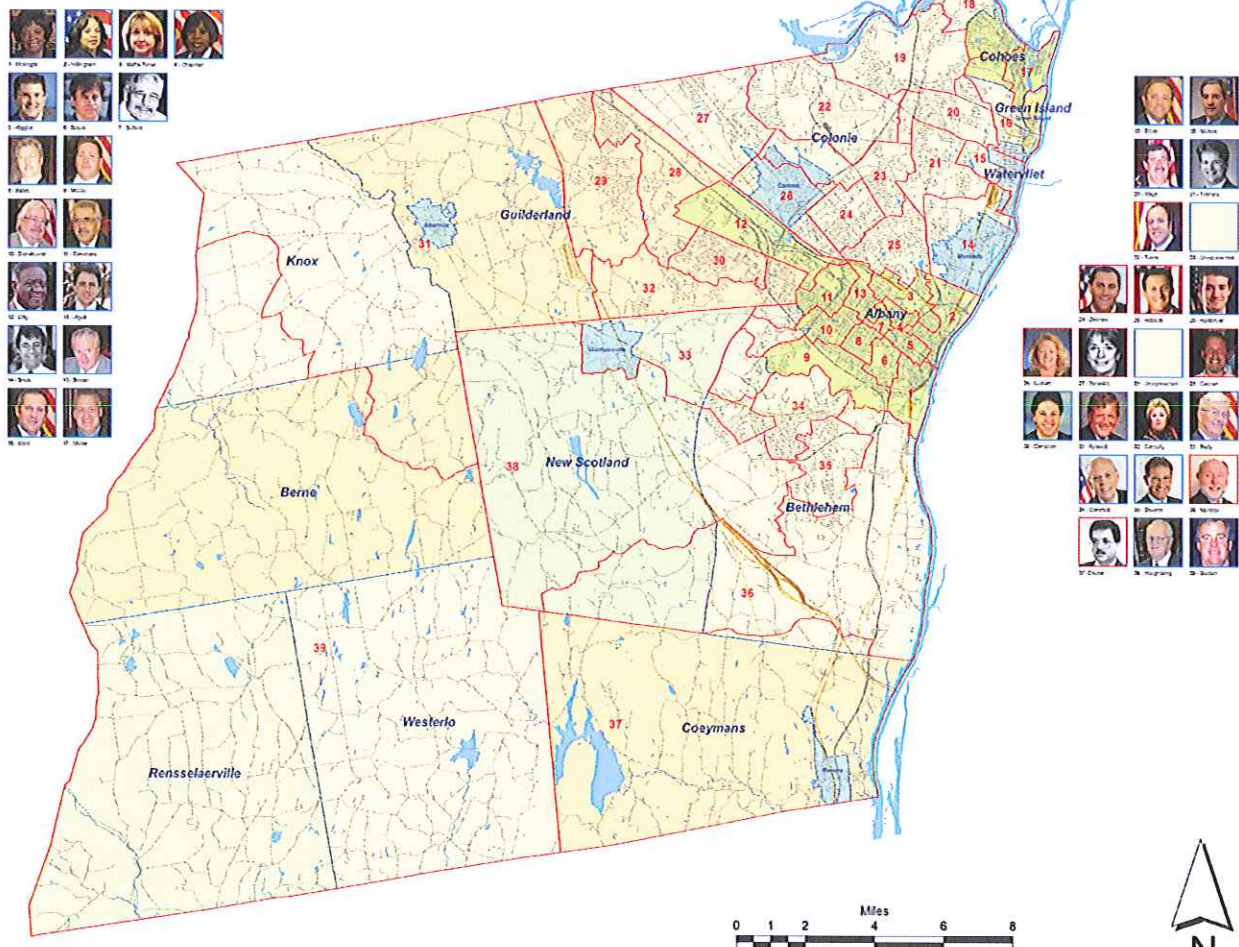


*Detail from Aaron Mair's plan of minority-majority districts.*

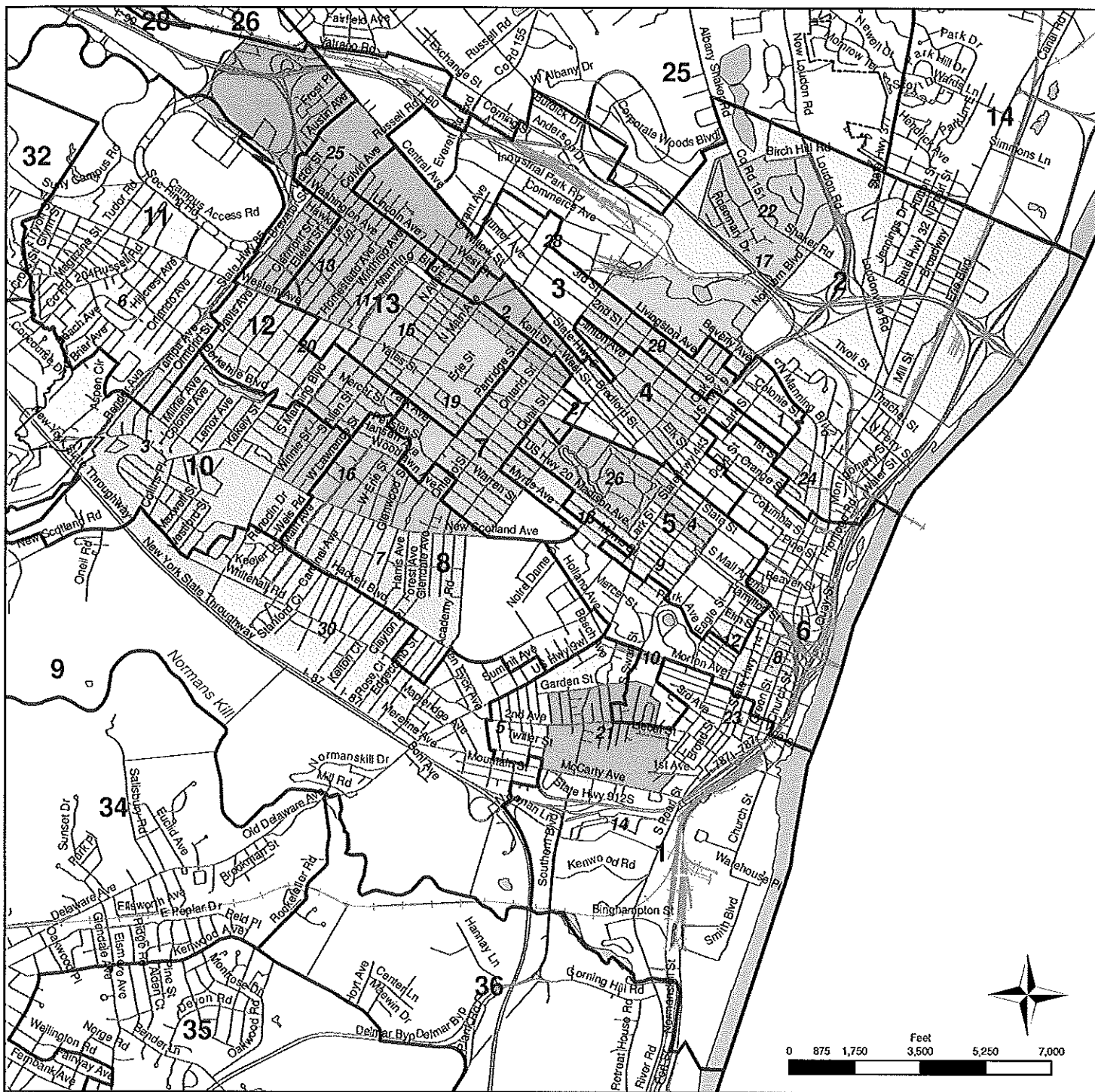
28. As a response to the May 9th hearing, the Commission asked me to try restoring the Village of Voorheesville to be included entirely in one legislative election district. They also wanted me to restore Ms. Kinsch to the district she had been in (and where she had previously announced her intention to run for election) in order to avoid a situation where she could claim that the Legislature was protecting their incumbent.
29. Thursday the 12th of May I was contacted by Rachel Bledi from the Board of Elections about helping them with mapping the new municipal voting districts. I said I would help if I could after the Legislative Districts were drawn.
30. I spent the weekend of May 21st and 22nd writing metes and bounds descriptions for all the districts and alternative descriptions for the 4 or 5 which I felt might be changed during the next week.
31. At the hearing on the 19th of May, the Commission approved the plans as drawn at that point, and voted to pass them on to the Legislature for their approval.
32. On May 23rd, the Legislature met to hear comments on the Commission's plan and vote on whether to accept it or not. Final vote: 22 in favor, 14 against, 3 abstentions (or absent, I forget and my notes were unclear.) The plan was forwarded to the County Executive for his consideration.

33. May 24th: met with the Board of Elections to discuss their needs and assess what help I could be to them.
34. Mr. Breslin held his public hearing on the redistricting plan on May 31st. 21 people commented. He approved the lines as drawn a few days later.
35. On June 1st, I met with Matt and Rachel at the Board of Elections, and discussed their data bases with Jason. After several attempts to plot the locations of registered voters and/or people identified as 18 or older by the Census, it was decided that I should just try adjusting the local ED's in each municipality to fit within the new LED's in Local Law C. The Board of Elections would then do the final maps, but, in the mean time, the politicians would have something to go on for their petitioning. I finished the final municipality ED adjustments on June 8th, and left for vacation on the 9th.

### Albany County, NY Local Law C Legislative Election Districts May 19, 2011



## AHEJ plan overlaid on Neighborhood Associations map



□ AHEJ Districts

### Neighborhood Associations

- 1 □ Arbor Hill Concerned Citizens
- 2 □ Bevenwyck Neighborhood Association
- 3 □ Buckingham Pond / Crestwood Neighborhood Assoc.
- 4 □ Center Square Neighborhood Association
- 5 □ Delaware Area Neighborhood Association
- 6 □ Eagle Hill Neighborhood Association
- 7 □ Helderberg Neighborhood Association
- 8 □ Historic Pastures Homeowners Association
- 9 □ Hudson Park Neighborhood Association

- 10 □ Lincoln Park Neighborhood Association
- 11 □ Manning Boulevard Neighborhood Assoc.
- 12 □ Mansion Neighborhood Association
- 13 □ Melrose Neighborhood Association
- 14 □ Mt. Hope Townhouse Association
- 15 □ New Albany Neighborhood Association
- 16 □ New Scotland / Woodlawn Neighborhood Assoc.
- 17 □ No. Albany / Shaker Park Neighborhood Assoc.
- 18 □ Park South Neighborhood Association
- 19 □ Pine Hills Neighborhood Association
- 20 □ Plymouth Neighborhood Association

- 21 □ Second Avenue Neighborhood Association
- 22 □ Shaker / Bishop's Gate Neighborhood Assoc.
- 23 □ South End Concerned Citizens
- 24 □ Ten Broeck Triangle (Historic District)
- 25 □ Upper Washington Ave. Neighborhood Assoc.
- 26 □ Washington Park Neighborhood Association
- 27 □ Washington Square Neighborhood Assoc.
- 28 □ West End Neighborhood Association
- 29 □ West Hill Neighborhood Association
- 30 □ Whitehall Neighborhood Association