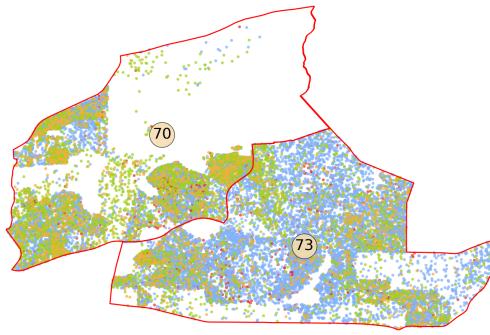
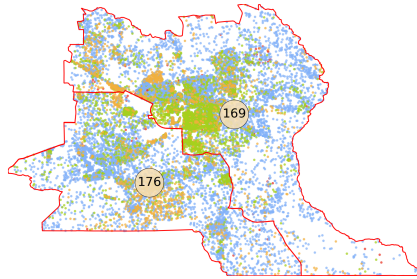


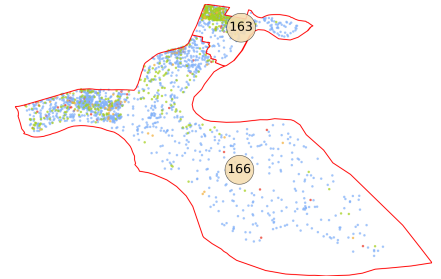
Figure 43: Illustrative county splits in the enacted House plan with racially distinctive patterns at the boundary lines.



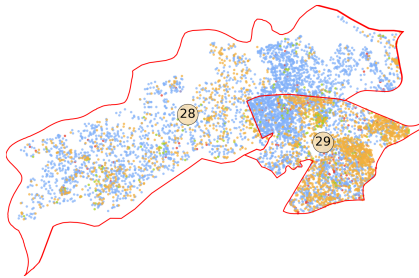
THE NEWNAN CENTRE



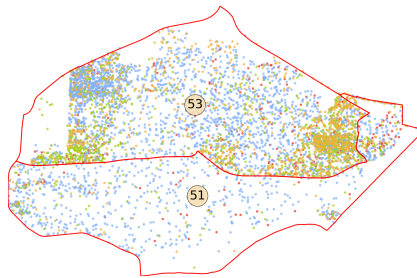
DOUGLAS



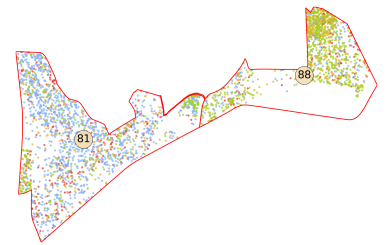
WINDSOR FOREST  
BAPTIST CHURCH SCHOOL



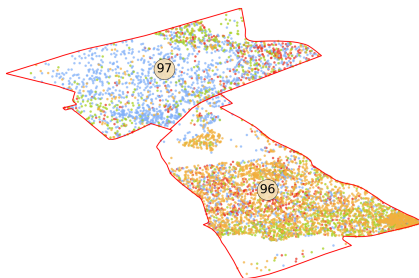
WILSON



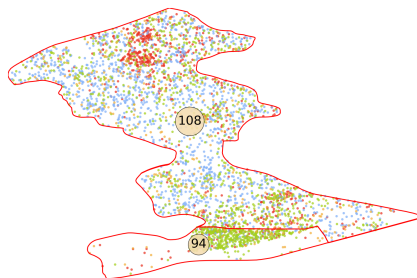
RW03



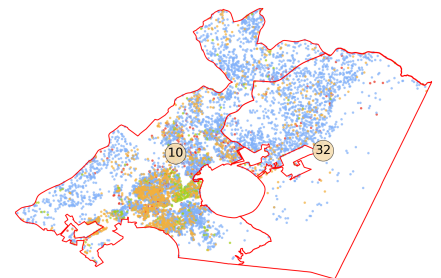
TUCKER



PINCKNEYVILLE W



CATES J



HABERSHAM SOUTH

Figure 44: Illustrative precinct splits in the enacted House plan with racially distinctive patterns at the boundary lines.

I reserve the right to continue to supplement my report in light of additional facts, testimony and/or materials that may come to light. Pursuant to 28 U.S.C. 1746, I declare under penalty of perjury of the laws of the United States that the foregoing is true and correct according to the best of my knowledge, information, and belief.

Executed this 13th day of January, 2023.

A handwritten signature in black ink, appearing to read 'Moon Duchin', written over a horizontal line.

Moon Duchin